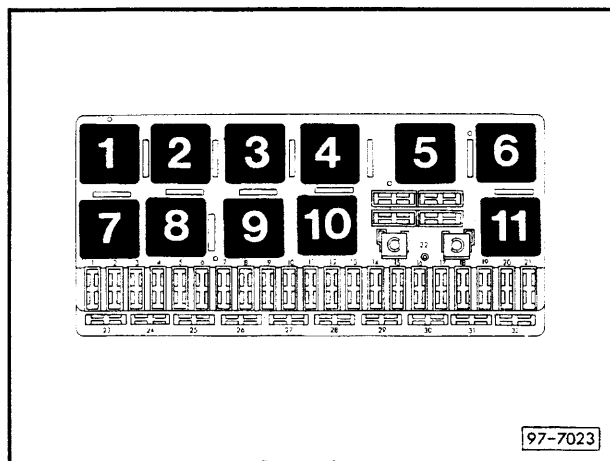


Auto-check system, 5-cylinder (2.3 litre KE-III Jetronic, 98 kW, 2.2 litre Motronic, 162 kW – S2 –), Audi Coupé

from July 1991

Position of relays
also see "Fitting Locations"

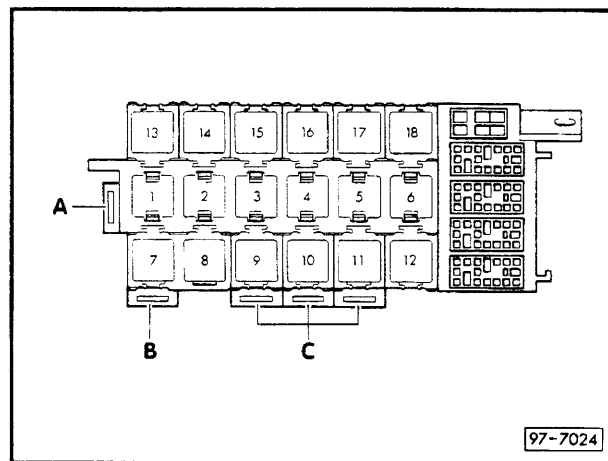
Relay plate with fuse holder:



Position of relays:

- 1** – Relay for fog lights
- 5** – Relief relay for X contact

Auxiliary relay carrier, front
(under dash panel, left)



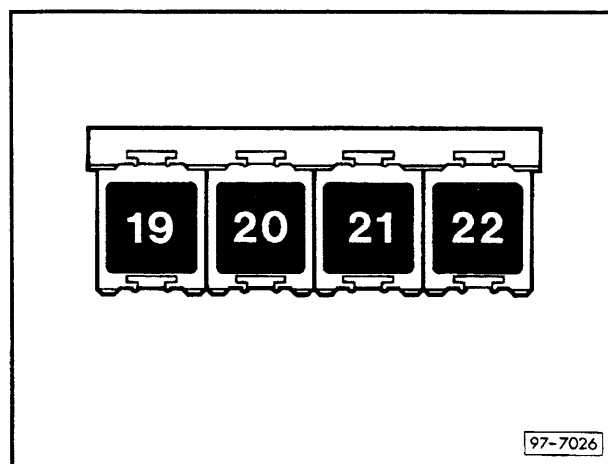
Position of relays:

- 12** – Buzzer for radio and lights
- 15** – Bulb monitoring device, front

Fuse colours

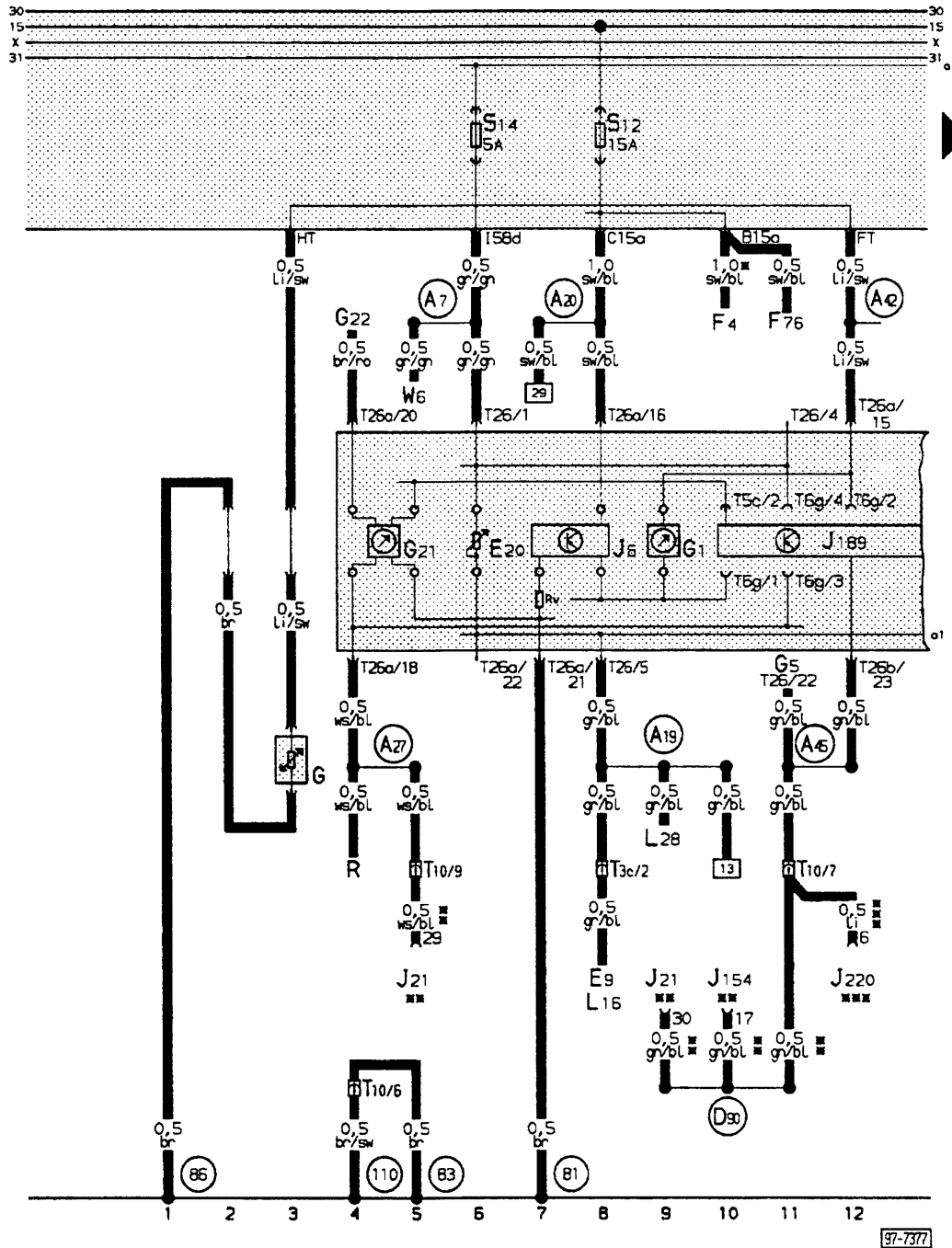
- 30 A – green
- 25 A – white
- 20 A – yellow
- 15 A – blue
- 10 A – red
- 5 A – beige

Auxiliary relay carrier, rear
(under rear seat bench, left)



Position of relays:

Auto-check system, 5-cylinder (2.3 litre KE-III Jetronic, 98 kW, 2.2 litre Motronic, 162 kW – S2 –)



Wiring colours:

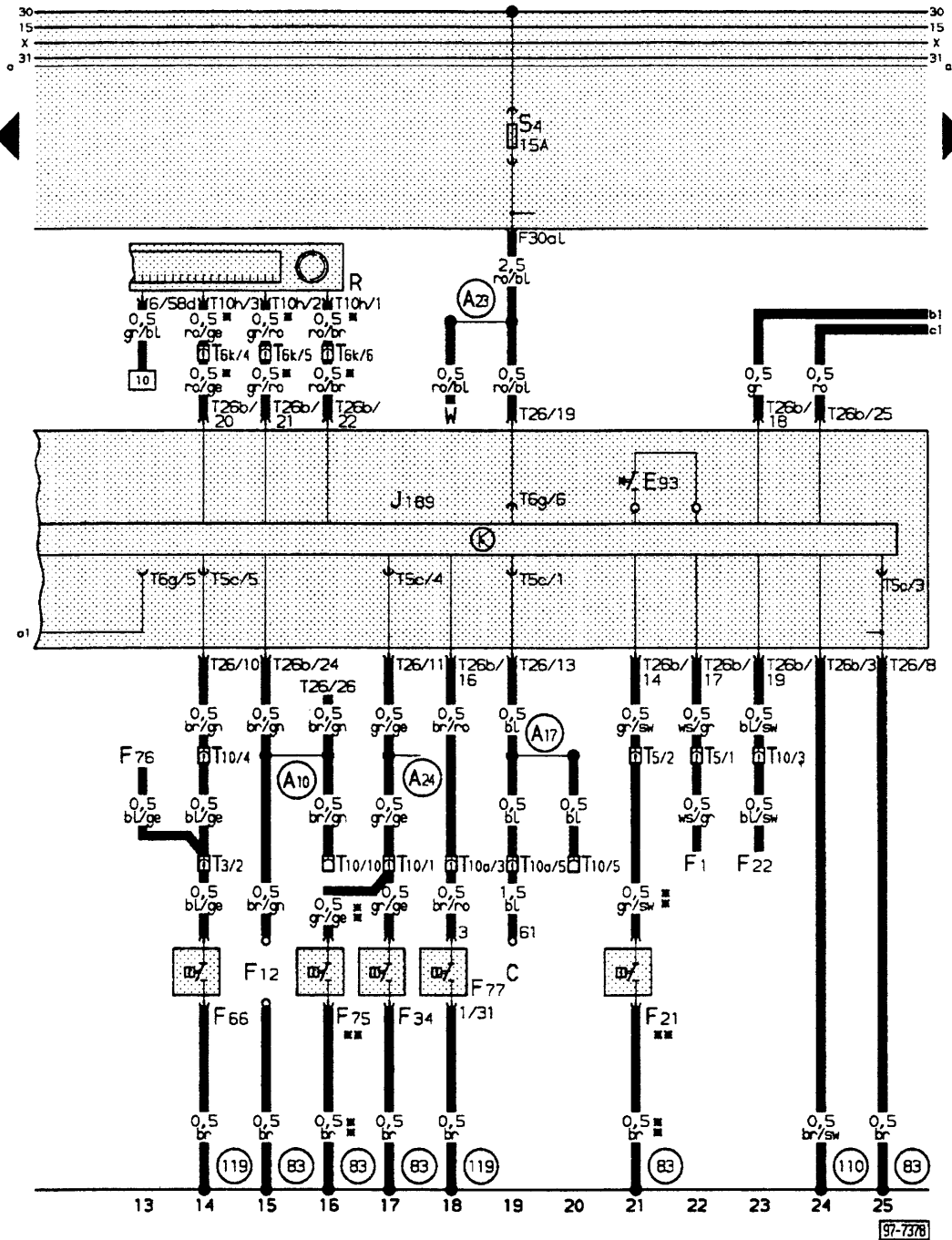
- bl = blue
- br = brown
- ge = yellow
- gn = green
- gr = grey
- li = purple
- ro = red
- sw = black
- ws = white

- E 9 – Fresh air blower switch
- E 20 – Switches and instruments – lighting control
- F 4 – Reversing light switch
- F 76 – Electronic thermostat switch
- G – Fuel gauge sender
- G 1 – Fuel gauge
- G 5 – Rev. counter
- G 21 – Speedometer
- G 22 – Speedometer sender
- J 6 – Voltage stabilizer
- J 21 – KE-Jetronic control unit
- J 154 – Control unit for electronic ignition with knock control
- J 189 – Auto-check system
- J 220 – Control unit for motronic
- L 16 – Fresh air controls light bulb
- L 28 – Cigarette lighter light bulb
- R – Radio
- T 3c – Connector 3 pin, brown, behind dash panel, centre
- T 5c – Connector 5 pin, on dash panel insert
- T 6g – Connector 6 pin, on dash panel insert
- T 10 – Connector 10 pin, black, connector point in aux. relay carrier
- T 26 – Connector 26 pin, yellow, on dash panel insert
- T 26a – Connector 26 pin, blue, on dash panel insert
- T 26b – Connector 26 pin, white, on dash panel insert (Auto-Check-System display unit)
- W 6 – Glove box light

- (81) – Earth connection – 1 –, in dash panel wiring loom
- (83) – Earth connection – 1 –, in front right wiring loom
- (86) – Earth connection – 1 –, in rear wiring loom
- (110) – Earth connection – 2 –, in dash panel wiring loom
- (A7) – Positive (+) connection (58 D1), in dash panel wiring loom
- (A19) – Connection (58d), in dash panel wiring loom
- (A20) – Connection (15a), in dash panel wiring loom
- (A27) – Connection (speed signal), in dash panel wiring loom
- (A28) – Connection (fuel gauge), in dash panel wiring loom
- (A46) – Connection (engine speed signal), in dash panel wiring loom
- (E20) – Connection (rpm signal), in engine compartment wiring loom
- * – only on vehicles with manual gearbox
- ** – only with 2.3 litre KE-III-Jetronic, 98 kW
- *** – only with 2.2 litre Motronic, 162 kW

97-7377

Auto-check system, 5-cylinder (2.3 litre KE-III Jetronic, 98 kW, 2.2 litre Motronic, 162 kW – S2 –)



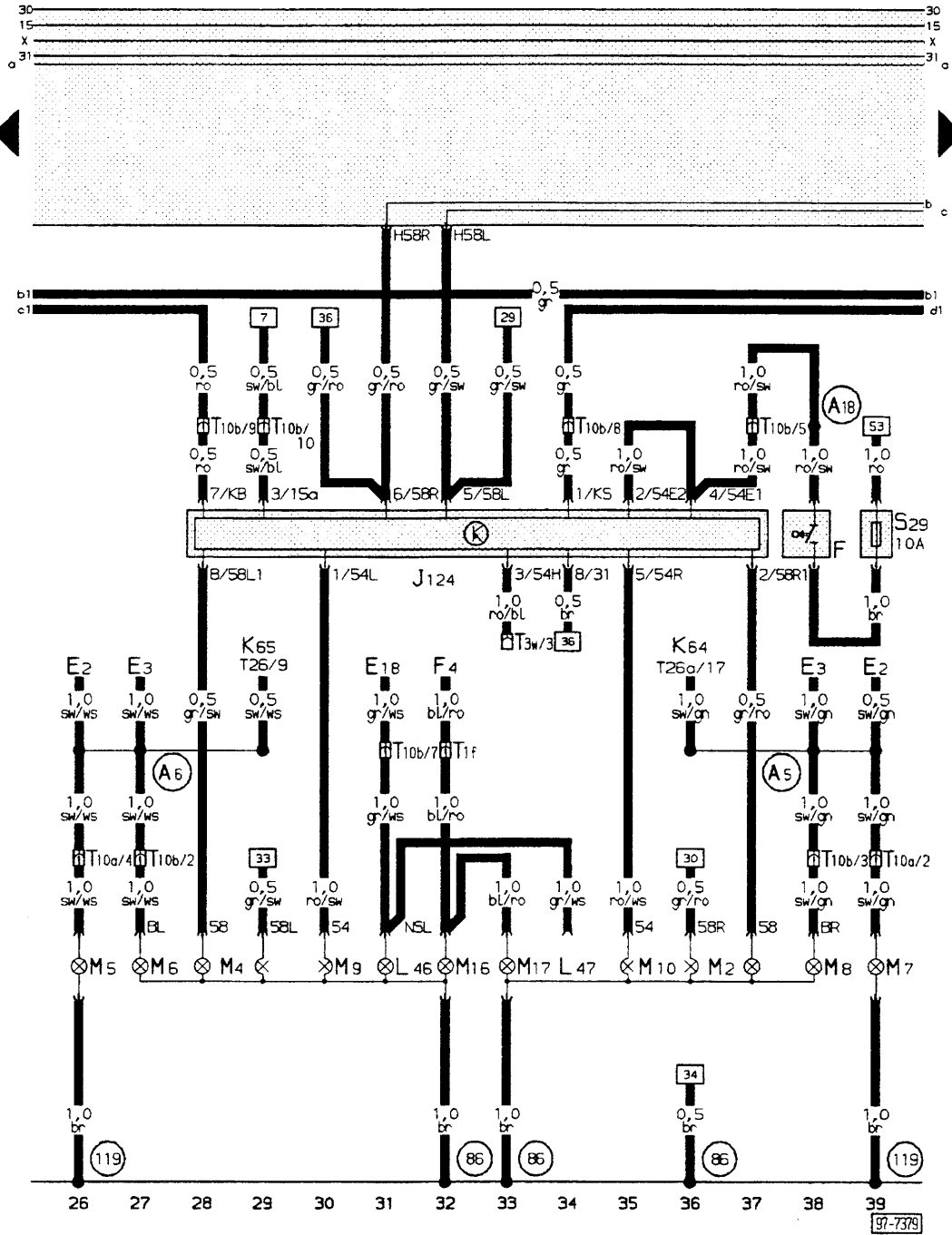
Wiring colours:

- bl = blue
- br = brown
- ge = yellow
- gn = green
- gr = grey
- li = purple
- ro = red
- sw = black
- ws = white

- C – Alternator
- E 93 – Button for auto-check system
- F 1 – Oil pressure switch (1.8 bar)
- F 12 – Cold start warning system contact
- F 21 – Hydraulic brake servo unit warning switch
- F 22 – Oil pressure switch (0.3 bar)
- F 34 – Brake fluid level warning contact
- F 66 – Coolant shortage indicator switch
- F 75 – Hydraulic fluid warning contact
- F 76 – Electronic thermostat
- F 77 – Warning contact for windscreen washer water
- J 189 – Auto-check system
- R – Radio
- T 3 – Connector 3 pin, black, behind dash panel, left
- T 5 – Connector 5 pin, black, connector point in aux. relay carrier
- T 5c – Connector 5 pin, on dash panel insert
- T 6g – Connector 6 pin, on dash panel insert
- T 6k – Connector 6 pin, black, behind console
- T 10 – Connector 10 pin, black, connector point in aux. relay carrier

- T 10a – Connector 10 pin, yellow, connector point in aux. relay carrier
- T 10h – Connector 10 pin, red, on radio
- T 26 – Connector 26 pin, yellow, on dash panel insert
- T 26b – Connector 26 pin, white, on dash panel insert (Auto-Check-System display unit)
- W – Interior light, front
- ⊕ – Earth connection – 1 –, in front right wiring loom
- ⊕ – Earth connection – 2 –, in dash panel wiring loom
- ⊕ – Earth connection – 1 –, in headlight wiring loom
- ⊕ – Connection (glow plug control) in dash panel wiring loom
- ⊕ – Connection (61), in dash panel wiring loom
- ⊕ – Connection (30a), in dash panel wiring loom
- ⊕ – Connection (brake system monitoring), in dash panel wiring loom
- * – only with Gamma radio (additional frequency display)
- ** – only with 2.2 litre Motronic, 162 kW

Auto-check system, 5-cylinder (2.3 litre KE-III Jetronic, 98 kW, 2.2 litre Motronic, 162 kW – S2 –)

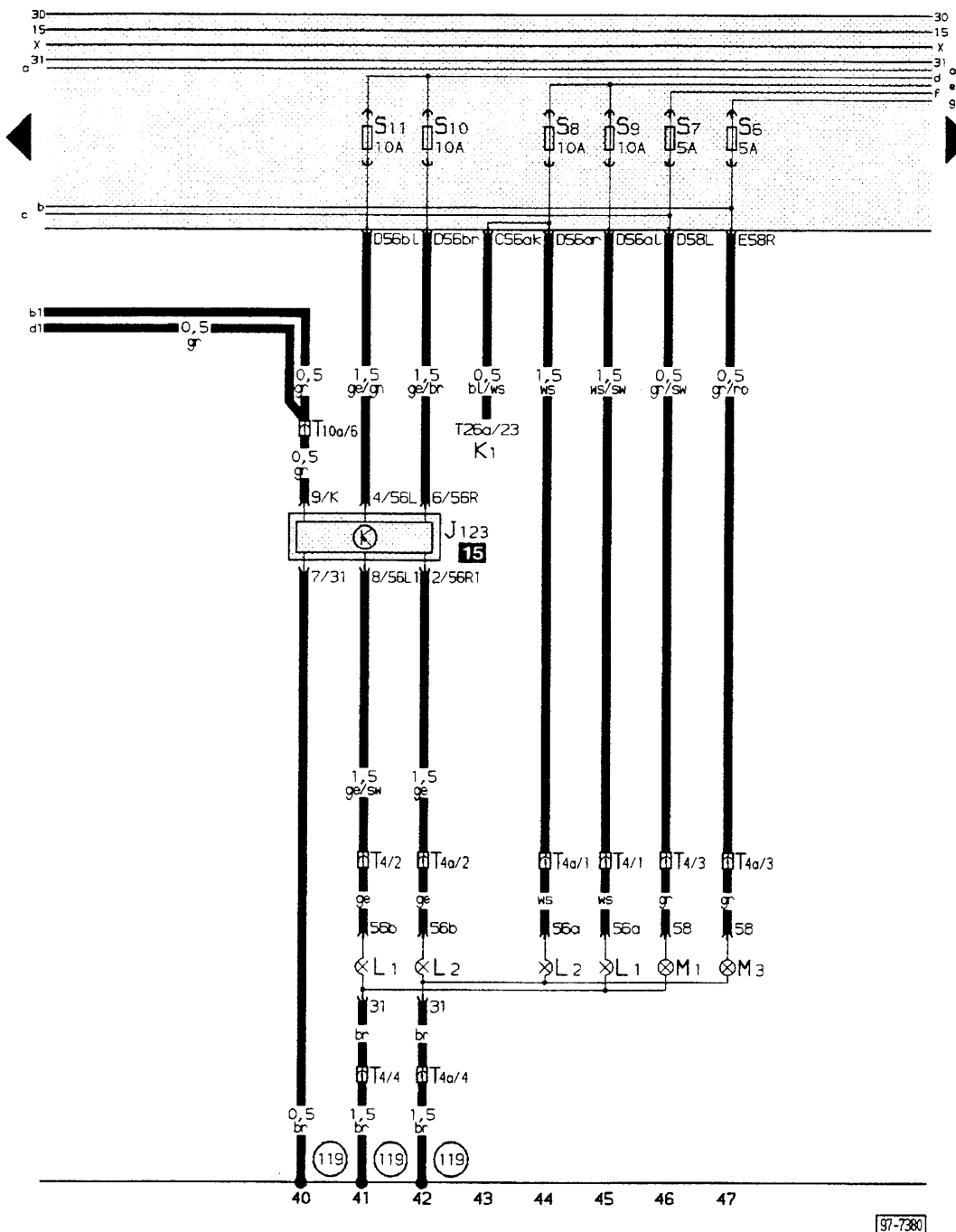


Wiring colours:
 bl = blue
 br = brown
 ge = yellow
 gn = green
 gr = grey
 li = purple
 ro = red
 sw = black
 ws = white

- E 2 – Turn signal switch
- E 3 – Emergency light switch
- E 18 – Rear fog light switch
- F – Brake light switch
- F 4 – Reversing light switch
- J 124 – Bulb monitoring device, rear
- K 64 – Emergency light and right turn signal warning lamp
- K 65 – Left turn signal warning lamp
- L 46 – Rear fog light bulb left
- L 47 – Rear fog light bulb right
- M 2 – Tail light bulb, right
- M 4 – Tail light bulb, left
- M 5 – Front left turn signal bulb
- M 6 – Rear left turn signal bulb
- M 7 – Front right turn signal bulb
- M 8 – Rear right turn signal bulb
- M 9 – Brake light bulb, left
- M 10 – Brake light bulb, right
- M 16 – Reversing light bulb, left
- M 17 – Reversing light bulb, right

- S 29 – Separate fuse for brake lights (in additional fuse holder)
- T 1f – Connector single, black, behind dash panel, left
- T 3w – Connector 3 pin, black, in luggage boot, left
- T 10a – Connector 10 pin, yellow, connector point in aux. relay carrier
- T 10b – Connector 10 pin, brown, connector point in aux. relay carrier
- T 26 – Connector 26 pin, yellow, on dash panel insert
- T 26a – Connector 26 pin, blue, on dash panel insert
- (86) – Earth connection – 1 –, in rear wiring loom
- (119) – Earth connection – 1 –, in headlight wiring loom
- (A5) – Positive (+) connection (turn signal, right), in dash panel wiring loom
- (A6) – Positive (+) connection (turn signal, left), in dash panel wiring loom
- (A18) – Connection (54), in dash panel wiring loom

Auto-check system, 5-cylinder (2.3 litre KE-III Jetronic, 98 kW, 2.2 litre Motronic, 162 kW – S2 –)

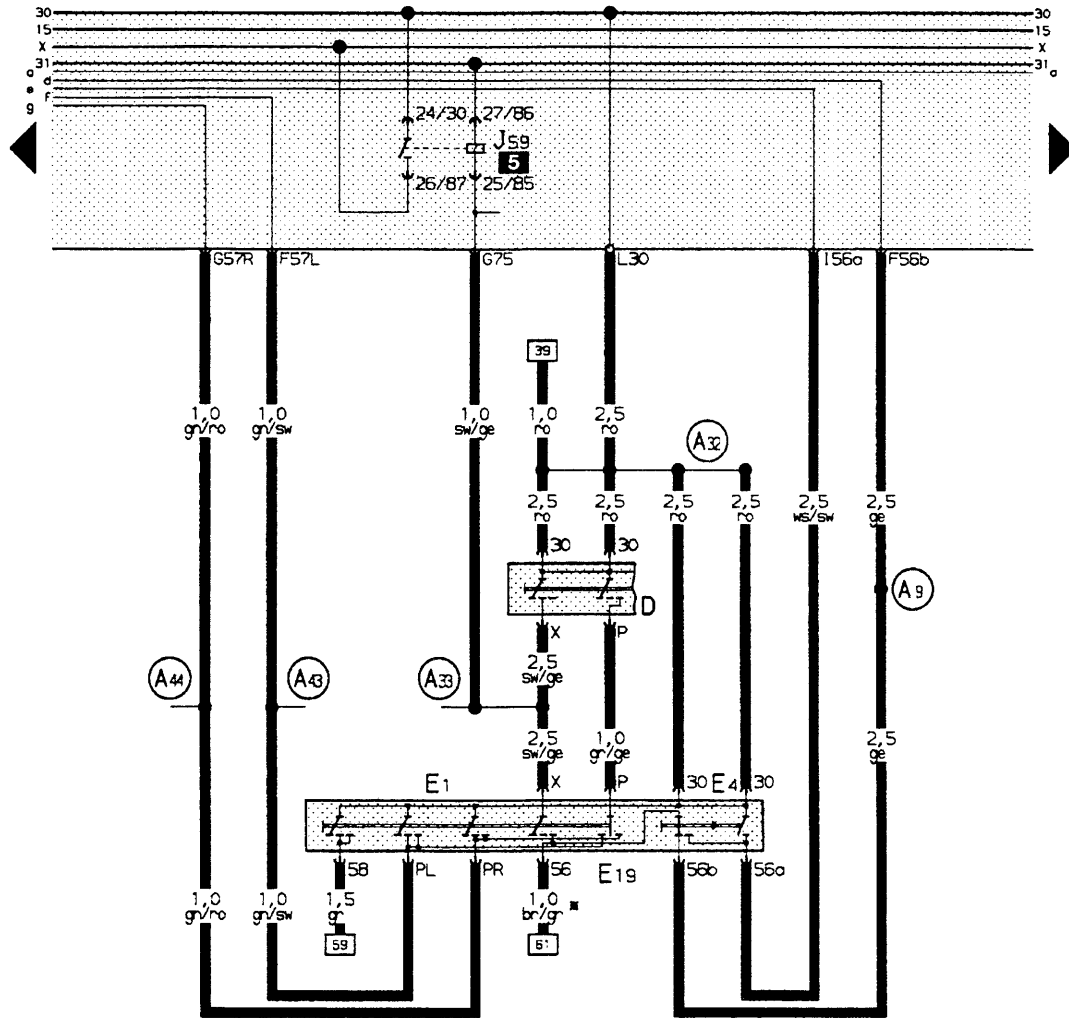


Wiring colours:

- bl = blue
- br = brown
- ge = yellow
- gn = green
- gr = grey
- li = purple
- ro = red
- sw = black
- ws = white

- J 123 – Bulb monitoring device, front
- K 1 – Main beam warning lamp
- L 1 – Twin filament bulb, left headlight
- L 2 – Twin filament bulb, right headlight
- M 1 – Side light bulb, left
- M 3 – Side light bulb, right
- T 4 – Connector 4 pin, near headlight, left
- T 4a – Connector 4 pin, near headlight, right
- T 10a – Connector 10 pin, yellow, connector point in aux. relay carrier
- T 26a – Connector 26 pin, blue, on dash panel insert
- ⓪ – Earth connection – 1 –, in headlight wiring loom

Auto-check system, 5-cylinder (2.3 litre KE-III Jetronic, 98 kW, 2.2 litre Motronic, 162 kW – S2 –)



Wiring colours:

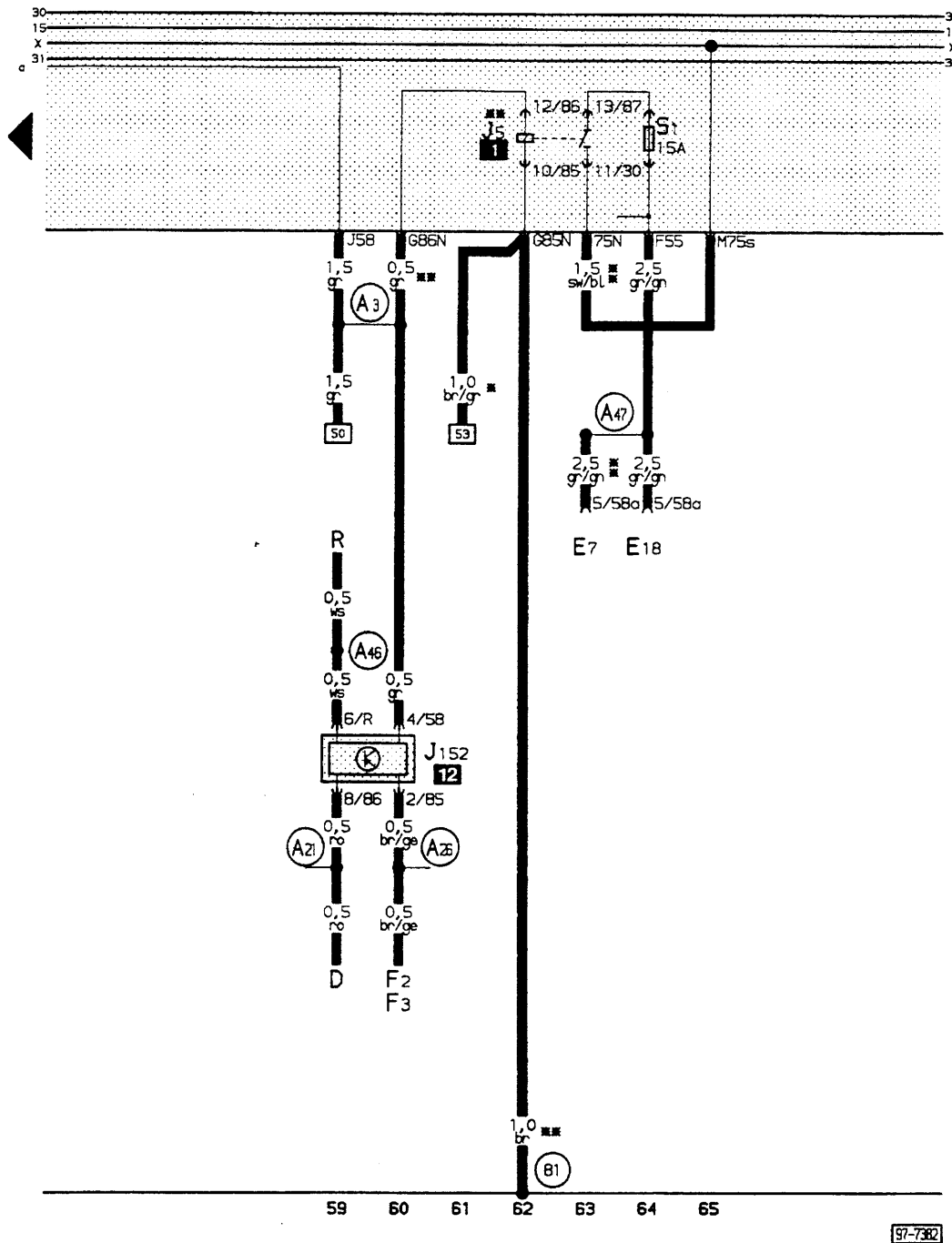
- bl = blue
- br = brown
- ge = yellow
- gn = green
- gr = grey
- li = purple
- ro = red
- sw = black
- ws = white

48 49 50 51 52 53 54 55 56 57 58

97-7381

- D – Ignition/starter switch
- E 1 – Lighting switch
- E 4 – Headlight dipper/flasher switch
- E 19 – Parking light switch
- J 59 – Relief relay for x contact
- (A9) – Positive (+) connection (56b), in dash panel wiring loom
- (A32) – Positive connection (30), in dash panel wiring loom
- (A33) – Connection (75), in dash panel wiring loom
- (A43) – Connection (57L), in dash panel wiring loom
- (A44) – Connection (57R), in dash panel wiring loom
- * – on versions without front fog lights

Auto-check system, 5-cylinder (2.3 litre KE-III Jetronic, 98 kW, 2.2 litre Motronic, 162 kW – S2 –)



Wiring colours:

- bl = blue
- br = brown
- ge = yellow
- gn = green
- gr = grey
- li = purple
- ro = red
- sw = black
- ws = white

- D – Ignition/starter switch
- E 7 – Fog light switch
- E 18 – Rear fog light switch
- F 2 – Front left door contact switch
- F 3 – Front right door contact switch
- J 5 – Fog light relay
- J 152 – Buzzer for side lights and radio
- ⓑ1 – Earth connection – 1 –, in dash panel wiring loom
- Ⓐ3 – Positive (+) connection (58), in dash panel wiring loom
- Ⓐ21 – Connection (86s), in dash panel wiring loom
- Ⓐ26 – Connection (door contact switch/driver side), in dash panel wiring loom
- Ⓐ46 – Positive (+) connection (30 – from radio), in dash panel wiring loom
- Ⓐ47 – Connection (55), in dash panel wiring loom
- * – without front fog lights
- ** – with front fog lights