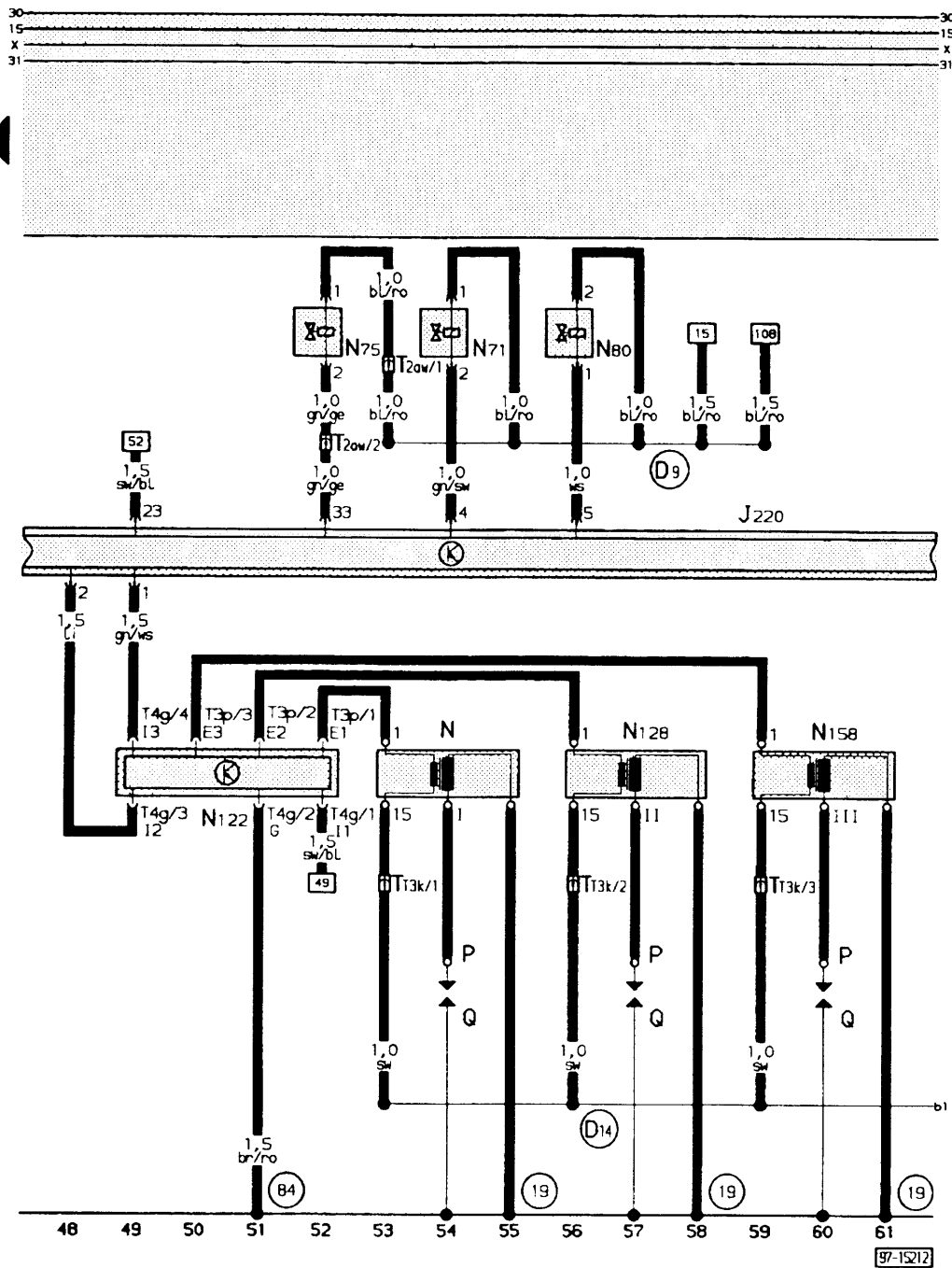


Electronic fuel injection, ignition system



- bl = blue
- br = brown
- ge = yellow
- gn = green
- gr = grey
- li = purple
- ro = red
- sw = black
- ws = white

- J 220 - Motronic control unit
- N - Ignition coil
- N 71 - Idling speed stabilisation valve
- N 75 - Solenoid valve for boost pressure control
- N 80 - Activated charcoal filter system solenoid valve I (pulsed)
- N 128 - Ignition coil 2
- N 158 - Ignition coil 3
- P - Spark plug connector
- Q - Spark plugs
- T 2 aw - Connector, 2-pin, in engine compartment, right
- T 3 k - Connector, 3-pin, white, for ignition coils
- T 3 p - Connector, 3-pin, for ignition end stage - ignition coils
- T 4 g - Connector, 4-pin, brown, for ignition end stage

- (84) - Earth connection, engine block, in front right wiring loom
- (D9) - Positive (+) connection (15), via fuse 27 in front right wiring loom
- (D14) - Connection (ignition coil control unit), in front right wiring loom

- (19) - Earth point, near ignition coil