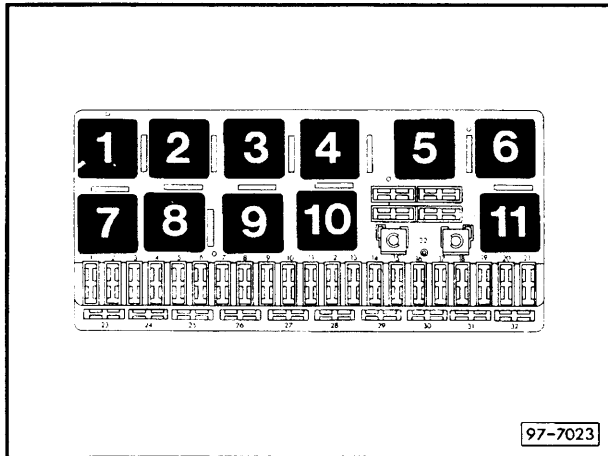


Electric sliding roof, Audi Avant

from July 1993

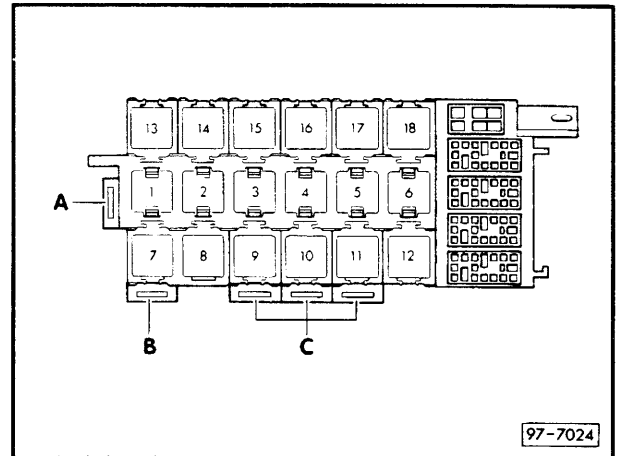
Position of relays
also see "Fitting Locations"

Relay plate with fuse holder:



Relay positions:

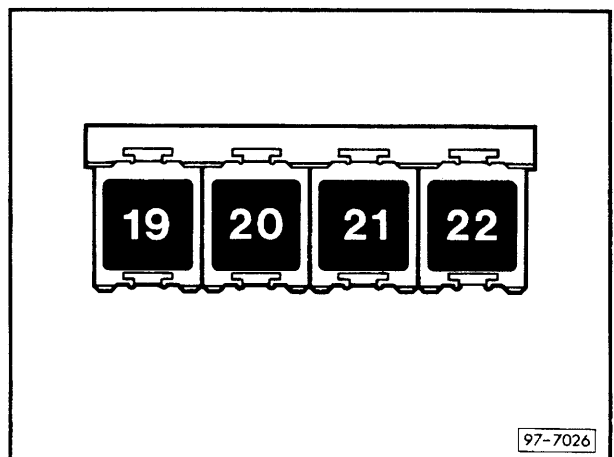
Auxiliary relay carrier, front
(below dash panel, left)



Relay positions:

- 5** } Control unit for electric sliding roof and window lifters
- 6** }

Auxiliary relay carrier, rear
(under rear seat bench, left)

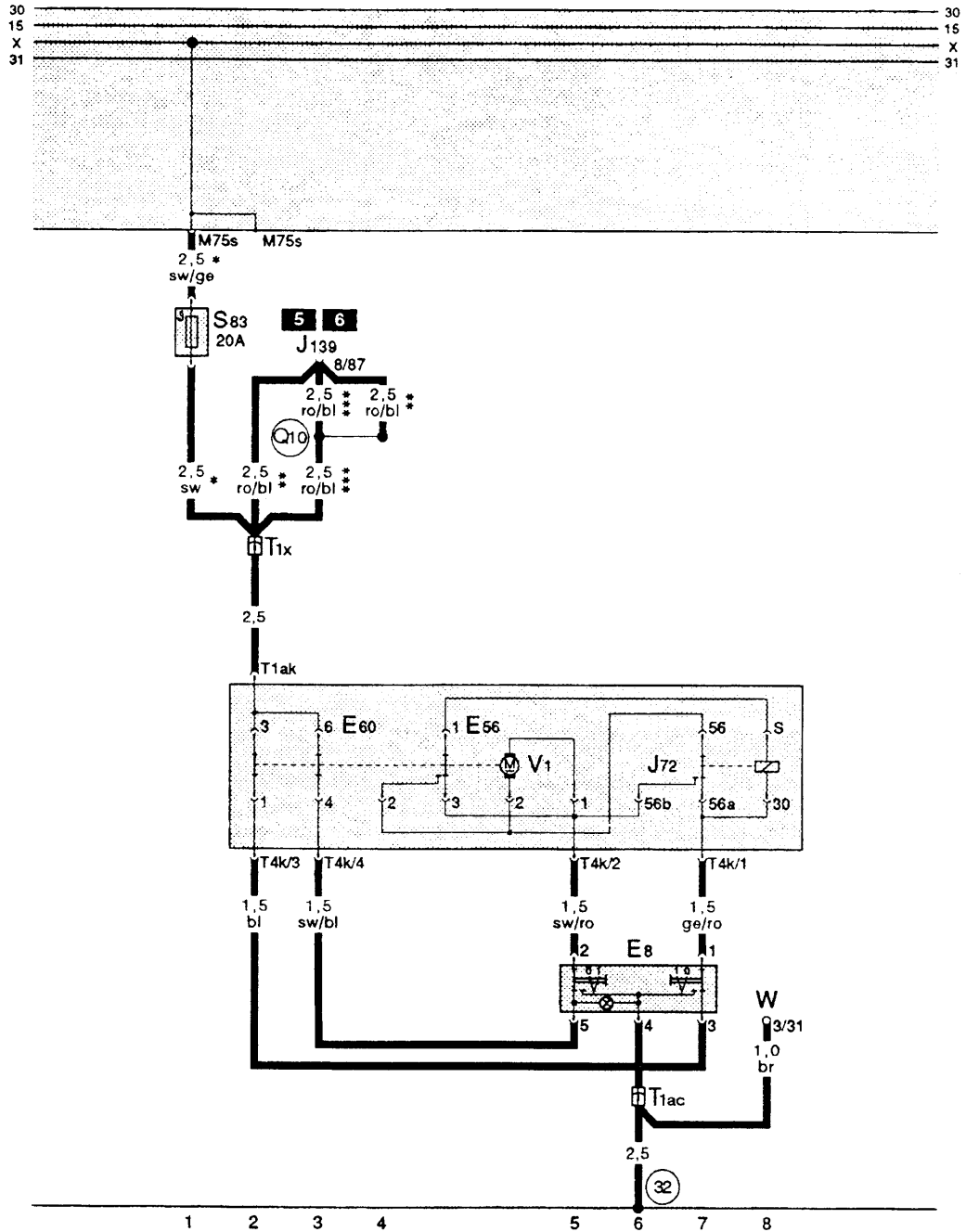


Relay positions:

Fuse colours

- 30 A – green
- 25 A – white
- 20 A – yellow
- 15 A – blue
- 10 A – red
- 5 A – beige

Electric sliding roof



Wiring colours:

- bl = blue
- br = brown
- ge = yellow
- gn = green
- gr = grey
- li = purple
- ro = red
- sw = black
- ws = white

- E 8 – Switch for sliding roof
- E 56 – Sliding roof cut-out switch (closed)
- E 60 – Sliding roof open/closed cut-out switch
- J 72 – Sliding roof relay
- J 139 – Control unit for window lifter and sliding roof
- S 83 – Thermo fuse for sliding roof
- T 1x – Connector single, green, behind dash panel, left
- T 1ac – Connector single, near sliding roof switch
- T 1ak – Connector single, black, near sliding roof switch
- T 4k – Connector 4 pin, black, near sliding roof switch
- V 1 – Sliding roof motor
- W – Interior light, front
- ⊙ – Earth point, behind dash panel, left
- ⊙ – Positive (+) connection (87), in window lifter/central locking and door contact switch wiring loom
- * – not on vehicles with electric window lifters
- ** – only on vehicles with electric window lifters (2 doors)
- *** – only on vehicles with electric window lifters (4 doors)