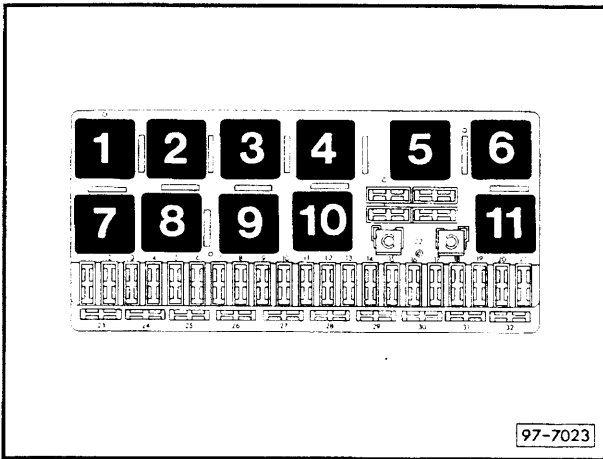


Infra-red receiver, anti-theft alarm system with central locking and interior light with delay feature

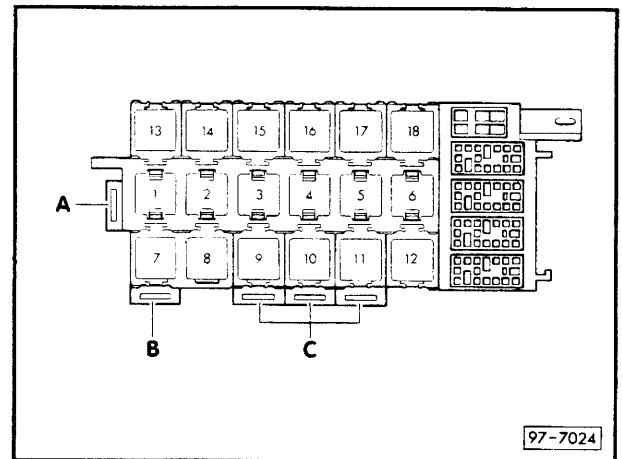
from July 1993

Position of relays
also see "Fitting Locations"

Relay plate with fuse holder:



Auxiliary relay carrier, front
(under dash panel, left)



Position of relays:

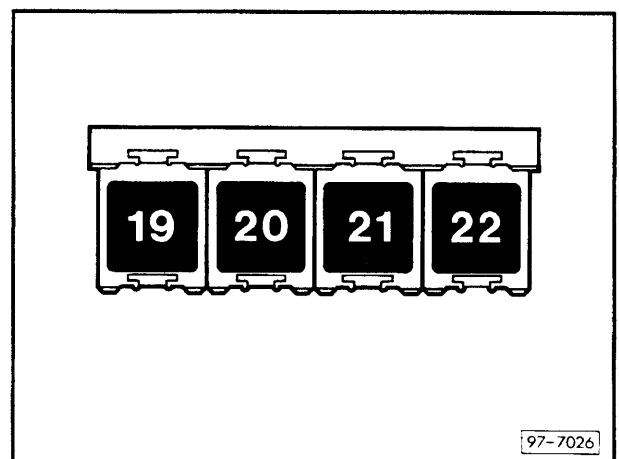
8 – Relay for anti-theft alarm system (starter inhibitor)

Position of relays:

Fuse colours

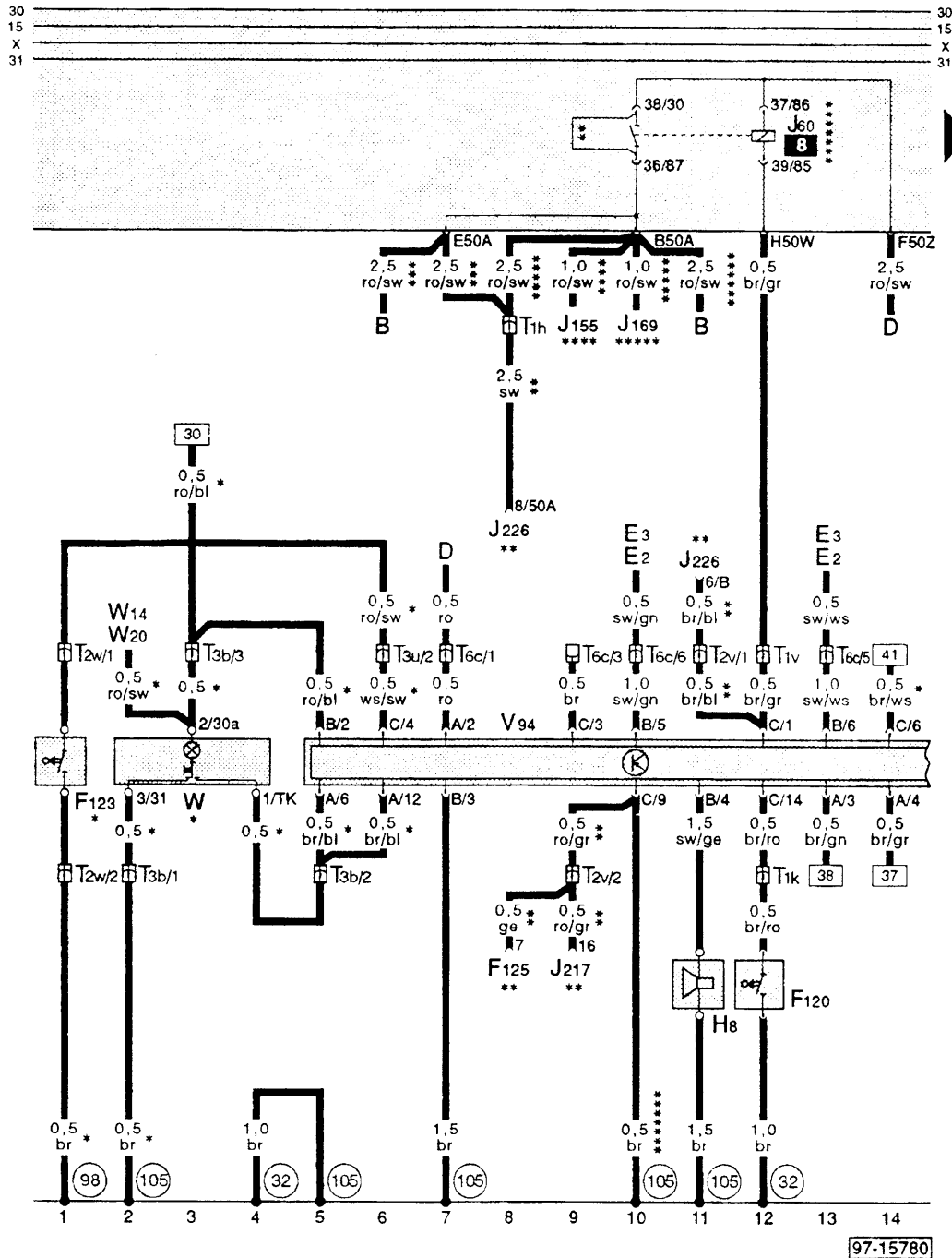
- 30 A – green
- 25 A – white
- 20 A – yellow
- 15 A – blue
- 10 A – red
- 5 A – beige

Auxiliary relay carrier, rear
(under rear seat bench, left)



Position of relays:

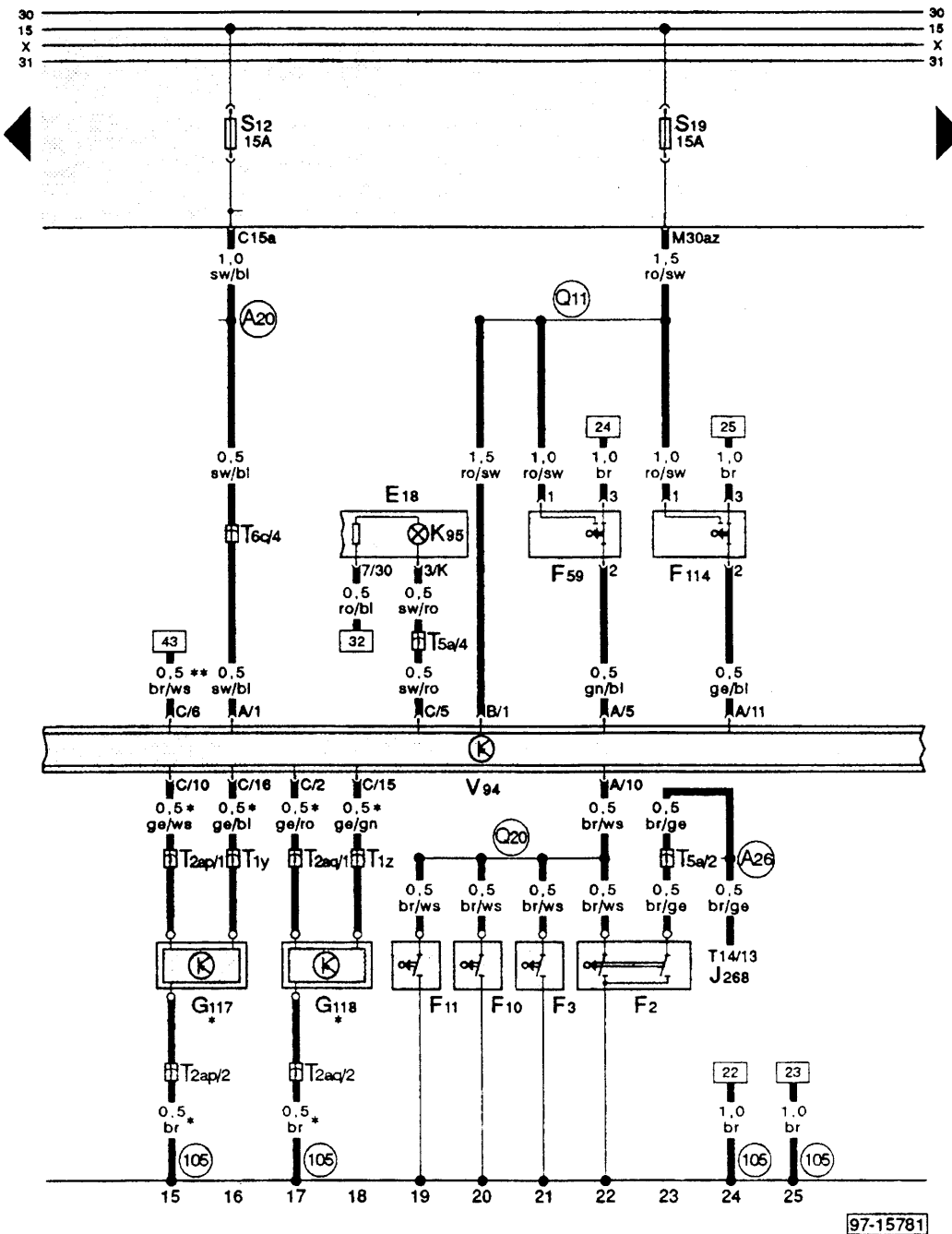
Infra-red receiver, anti-theft alarm system with central locking and interior light with delay feature



- Wiring colours:**
- bl = blue
 - br = brown
 - ge = yellow
 - gn = green
 - gr = grey
 - li = purple
 - ro = red
 - sw = black
 - ws = white

- | | |
|--|---|
| <ul style="list-style-type: none"> B – Starter D – Ignition/starter switch E 2 – Turn signal switch E 3 – Emergency light switch F 120 – Contact switch for anti-theft alarm F 123 – Tailgate contact switch for anti-theft alarm F 125 – Multi-function switch H 8 – Horn for anti-theft alarm J 60 – Automatic gearbox relay J 155 – Switch unit for coolant pump/turbocharger J 169 – Control unit for Digifant J 217 – Control unit for automatic gearbox J 226 – Relay for starter inhibitor and reversing light T 1h – Connector single, red, behind dash panel, left T 1k – Connector single, blue, behind dash panel T 1v – Connector single, black, under rear seat centre T 2v – Connector 2 pin, white, behind dash panel T 2w – Connector 2 pin, grey, in tailgate lock T 3b – Connector 3 pin, green, behind dash panel, left T 3u – Connector 3 pin, black, in luggage boot, left T 6c – Connector 6 pin, black, behind dash panel, left V 94 – Motor for central locking with control unit for interior lights switch-off delay and anti-theft alarm system | <ul style="list-style-type: none"> W – Interior light, front W 14 – Illuminated Make-up mirror (passenger's side) W 20 – Illuminated Make-up mirror (driver's side) ⊙32 – Earth point, behind dash panel, left ⊙98 – Earth connection, in tailgate wiring loom ⊙105 – Earth connection – 1 – in central locking wiring loom ⊙30a – Connection (30a), in dash panel wiring loom .. – only with Audi 80 *** – only on vehicles with automatic gearbox **** – only with 2.0 litre K-Motronic 103 kW, 4-cylinder and 6-cylinder fuel injection engines ***** – only with 1.9 litre diesel engine 55 kW, 4-cylinder with manual gearbox ***** – only with 2.0 litre Digifant 85 kW, 4-cylinder ***** – not with 2.0 litre K-Motronic 103 kW, 4-cylinder and 6-cylinder fuel injection engines ***** – only on vehicles with manual gearbox |
|--|---|

Infra-red receiver, anti-theft alarm system with central locking and interior light with delay feature

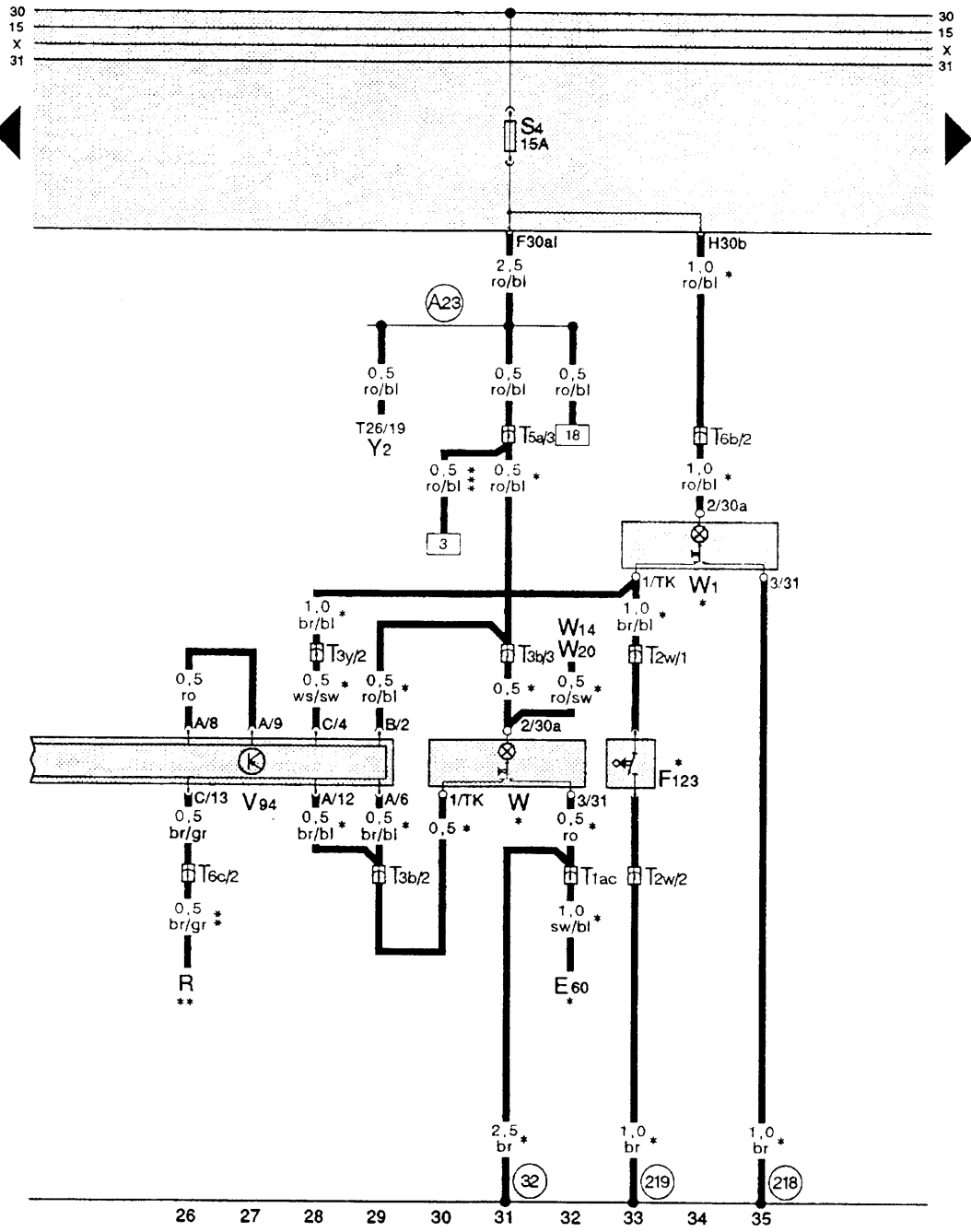


- Wiring colours:**
- bl = blue
 - br = brown
 - ge = yellow
 - gn = green
 - gr = grey
 - li = purple
 - ro = red
 - sw = black
 - ws = white

97-15781

- | | |
|---|--|
| <ul style="list-style-type: none"> E 18 – Rear fog light switch F 2 – Front left door contact switch F 3 – Front right door contact switch F 10 – Rear left door contact switch F 11 – Rear right door contact switch F 59 – Switch for central locking (driver's side) F 114 – Switch for central locking (passenger side) G 117 – Infrared sensor, left, for central locking G 118 – Infrared sensor, right, for central locking J 268 – Control unit for mini-check-system K 95 – Alarm system warning lamp T 1y – Connector single, in driver's door T 1z – Connector single, in front passenger door T 2ap – Connector 2 pin, in driver's door T 2aq – Connector 2 pin, in front passenger door T 5a – Connector 5 pin, brown, connector point in aux. relay carrier T 6c – Connector 6 pin, black, behind dash panel, left T 14 – Connector 14 pin, white, on dash panel insert (mini-check system) | <ul style="list-style-type: none"> V 94 – Motor for central locking with control unit for interior lights switch-off delay and anti-theft alarm system (105) – Earth connection – 1 –, in central locking wiring loom (A20) – Connection (15a), in dash panel wiring loom (A26) – Connection (door contact switch/driver side), in dash panel wiring loom (Q11) – Positive (+) connection (30az), in window lifter/central locking and door contact switch wiring loom (Q20) – Connection – 1 – (door contact switch), in window lifter wiring loom * – only when equipped with infra-red receiver ** – only with Audi Avant |
|---|--|

Infra-red receiver, anti-theft alarm system with central locking and interior light with delay feature



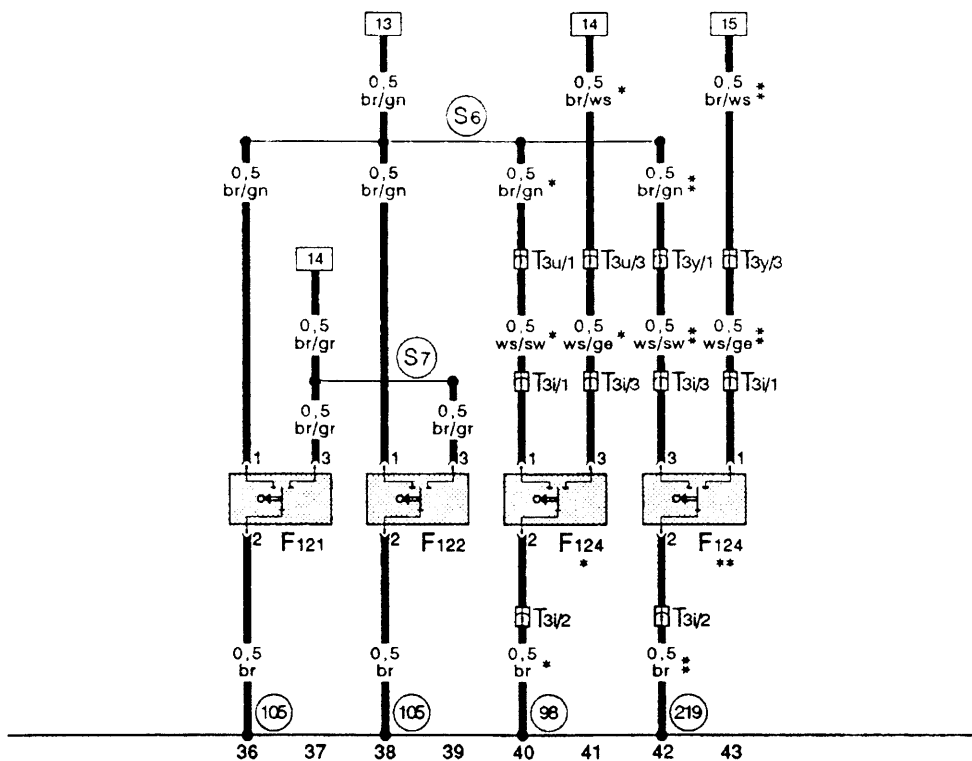
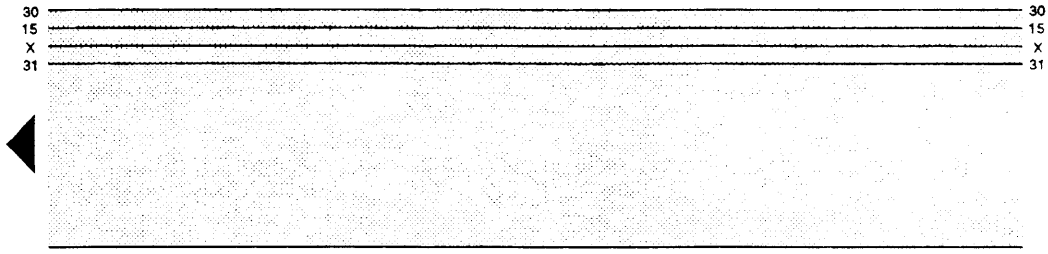
Wiring colours:

- bl = blue
- br = brown
- ge = yellow
- gn = green
- gr = grey
- li = purple
- ro = red
- sw = black
- ws = white

97-16055

- | | | | |
|-------|--|-------|---|
| E 60 | - Sliding roof open/closed cut-out switch | (32) | - Earth point, behind dash panel, left |
| F 123 | - Tailgate contact switch for anti-theft alarm | (218) | - Earth connection - 1 -, in tailgate wiring loom |
| R | - Radio | (219) | - Earth connection - 2 -, in tailgate wiring loom |
| T 1ac | - Connector single, near sliding roof switch | (A23) | - Connection (30al), in dash panel wiring loom |
| T 2w | - Connector 2 pin, grey, in tailgate lock | * | - only with Audi Avant |
| T 3b | - Connector 3 pin, green, behind dash panel, left | ** | - only when equipped with radio |
| T 3y | - Connector 3 pin, white, in luggage boot, left | *** | - only with Audi 80 |
| T 5a | - Connector 5 pin, brown, connector point in aux. relay carrier | | |
| T 6c | - Connector 6 pin, yellow, in luggage boot, left | | |
| T 26 | - Connector 26 pin, yellow, on dash panel insert | | |
| V 94 | - Motor for central locking with control unit for interior lights switch-off delay and anti-theft alarm system | | |
| W | - Interior light, front | | |
| W 1 | - Interior light, luggage compartment | | |
| W 14 | - Illuminated Make-up mirror (passenger's side) | | |
| W 20 | - Illuminated Make-up mirror (driver's side) | | |
| Y 2 | - Digital clock | | |

Infra-red receiver, anti-theft alarm system with central locking and interior light with delay feature



Wiring colours:

- bl = blue
- br = brown
- ge = yellow
- gn = green
- gr = grey
- li = purple
- ro = red
- sw = black
- ws = white

97-15782

- F 121 – Driver's door switch for anti-theft alarm
- F 122 – Passenger door switch for anti-theft alarm
- F 124 – Contact switch in lock cylinder for tailgate/anti-theft warning system/central locking system
- T 3i – Connector 3 pin, black, in tailgate
- T 3u – Connector 3 pin, black, in luggage boot, left
- T 3y – Connector 3 pin, white, in luggage boot, left
- ⑨⑧ – Earth connection, in tailgate wiring loom
- ⑩⑤ – Earth connection – 1 –, in central locking wiring loom
- ⑳⑨ – Earth connection – 2 –, in tailgate wiring loom
- ⑨⑥ – Connection (A) – 1 –, in central locking system wiring loom
- ⑨⑦ – Connection (A) – 2 –, in central locking system wiring loom
- * – only with Audi 80
- ** – only with Audi Avant