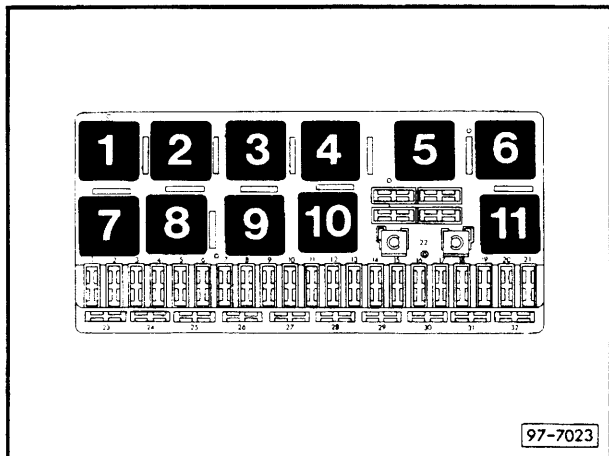


Anti-lock brake system with 4-wheel drive

from July 1993

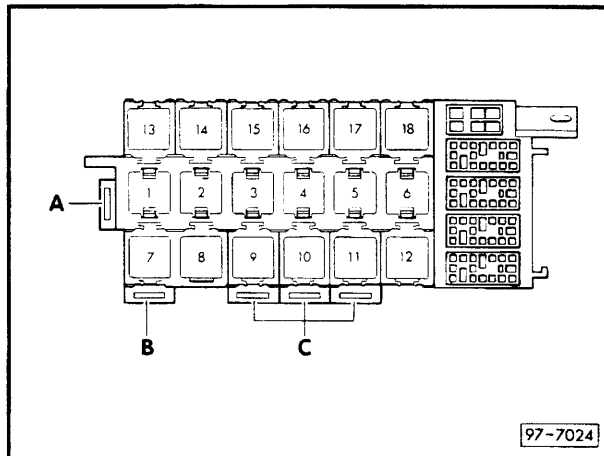
Position of relays
also see "Fitting Locations"

Relay plate with fuse holder:



Relay positions:

Auxiliary relay carrier, front
(under dash panel, left)

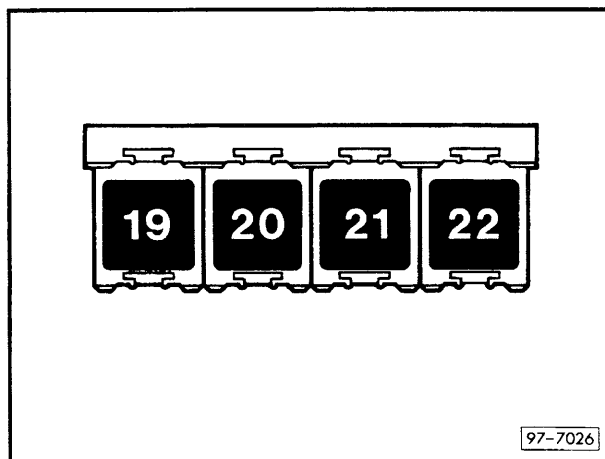


Relay positions:

Fuse colours

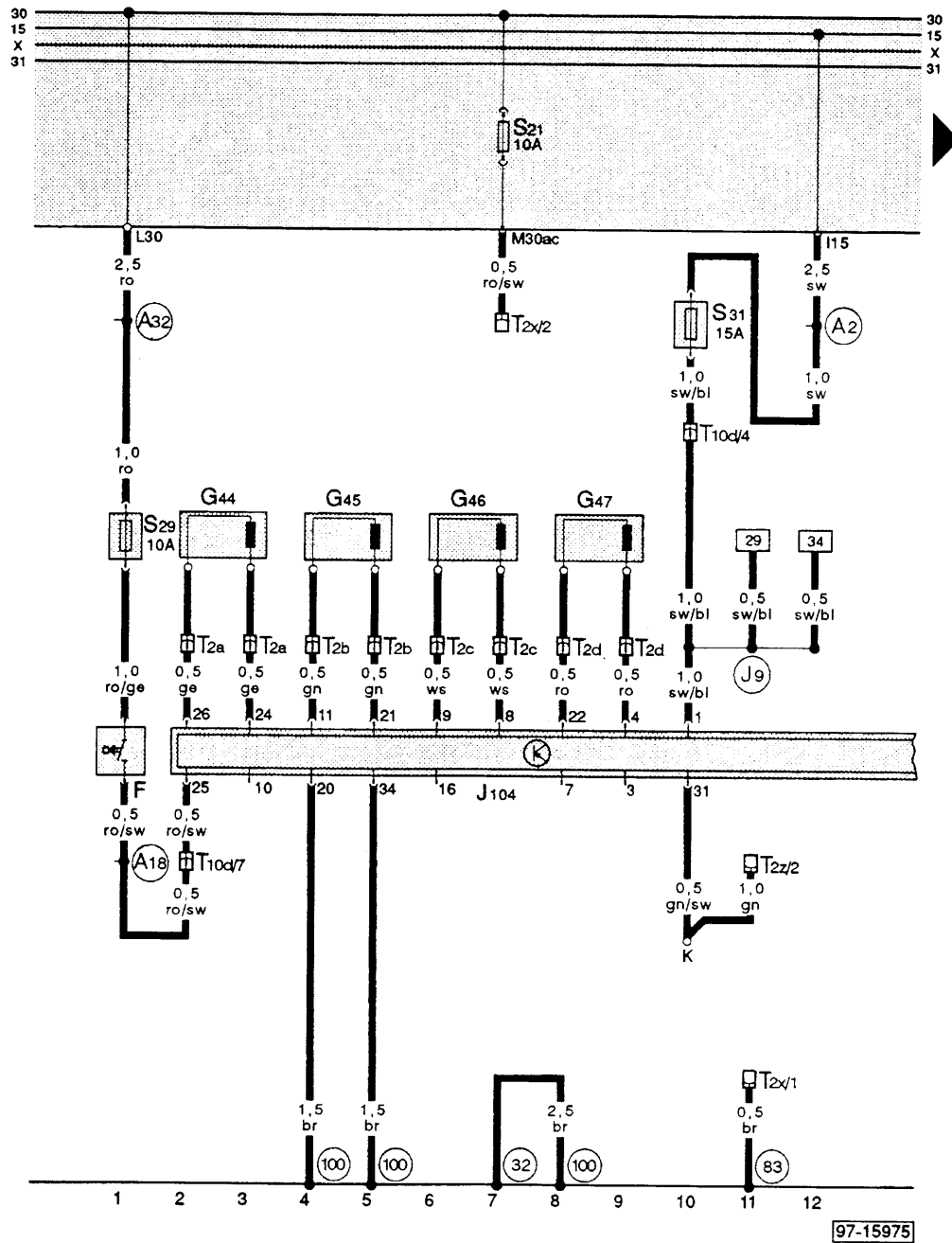
- 30 A – green
- 25 A – white
- 20 A – yellow
- 15 A – blue
- 10 A – red
- 5 A – beige

Auxiliary relay carrier, rear
(under rear seat, left)



Relay positions:

Anti-lock braking system with four-wheel drive



Wiring colours:

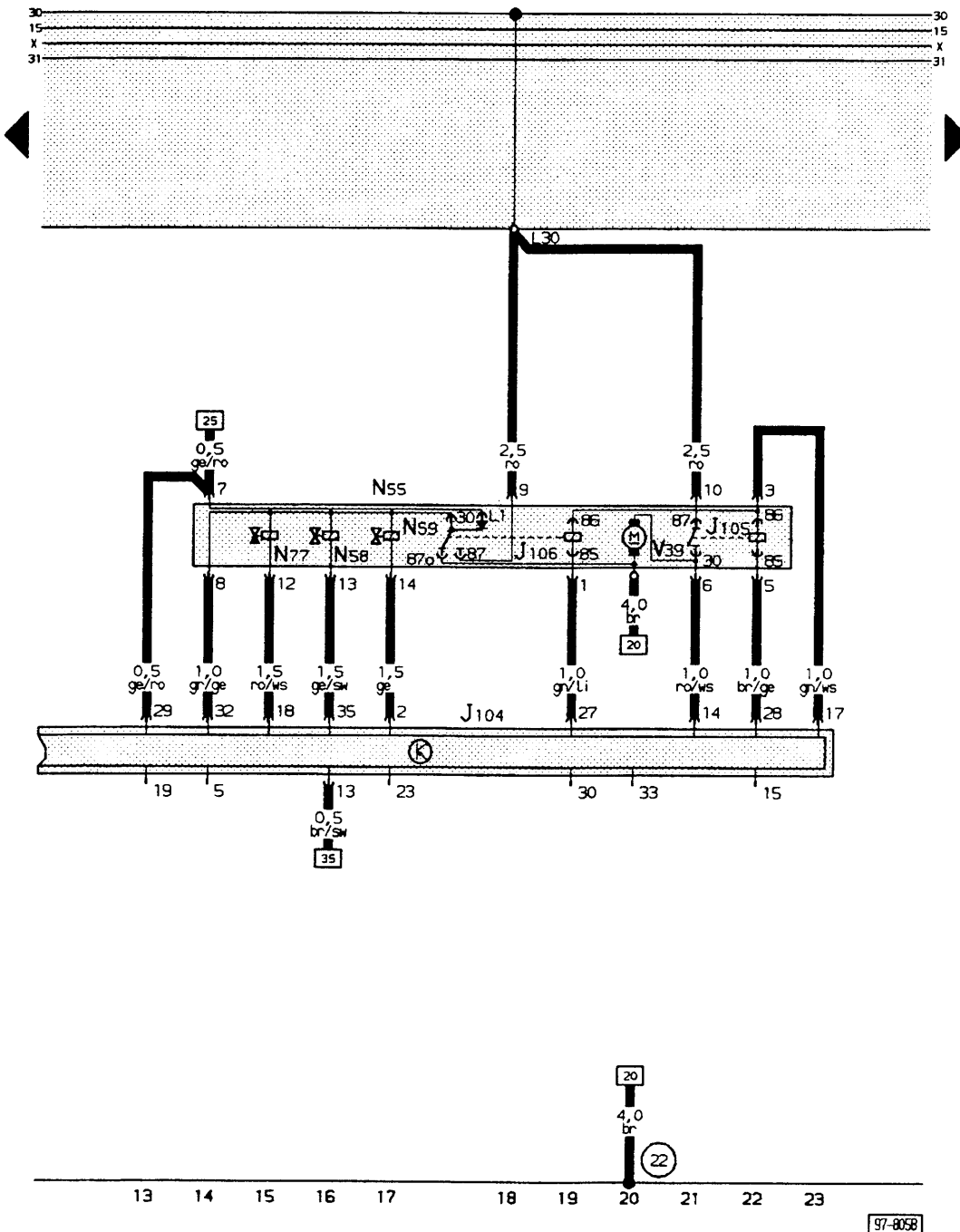
- ws = white
- sw = black
- ro = red
- br = brown
- gn = green
- bl = blue
- gr = grey
- li = purple
- ge = yellow

- F – Brake light switch
- G 44 – Rear right speed sensor (ABS)
- G 45 – Front right speed sensor (ABS)
- G 46 – Rear left speed sensor (ABS)
- G 47 – Front left speed sensor (ABS)
- J 104 – ABS control unit
- S 29 – Separate fuse for brake lights (in additional fuse holder)
- S 31 – Separate fuse for ABS (in additional fuse holder)
- T 2a – Connector 2 pin, under rear seat, right
- T 2b – Connector 2 pin, in engine compartment, right
- T 2c – Connector 2 pin, under rear seat, left
- T 2d – Connector 2 pin, in engine compartment, left
- T 2x – Connector 2 pin, black, in plenum chamber near relay plate (diagnosis plug)
- T 2z – Connector 2 pin, white, in plenum chamber near relay plate (diagnosis plug)
- T 10d – Connector 10 pin, blue, connector point in aux. relay carrier

- ⓐ – Earth point, behind dash panel, left
- ⓑ – Earth connection – 1 –, in front right wiring loom
- ⓒ – Earth connection – 1 –, in ABS wiring loom
- ⓓ – Positive (+) connection (15), in dash panel wiring loom
- ⓔ – Connection (54), in dash panel wiring loom
- ⓕ – Positive connection (30), in dash panel wiring loom
- ⓖ – Connection – 1 – (15a), in ABS wiring loom
- K – wiring adapter for diagnosis plug (K-wire)

Note: Wiring adapters are screwed onto frame of relay carrier (in plenum chamber).

Anti-lock braking system with four-wheel drive

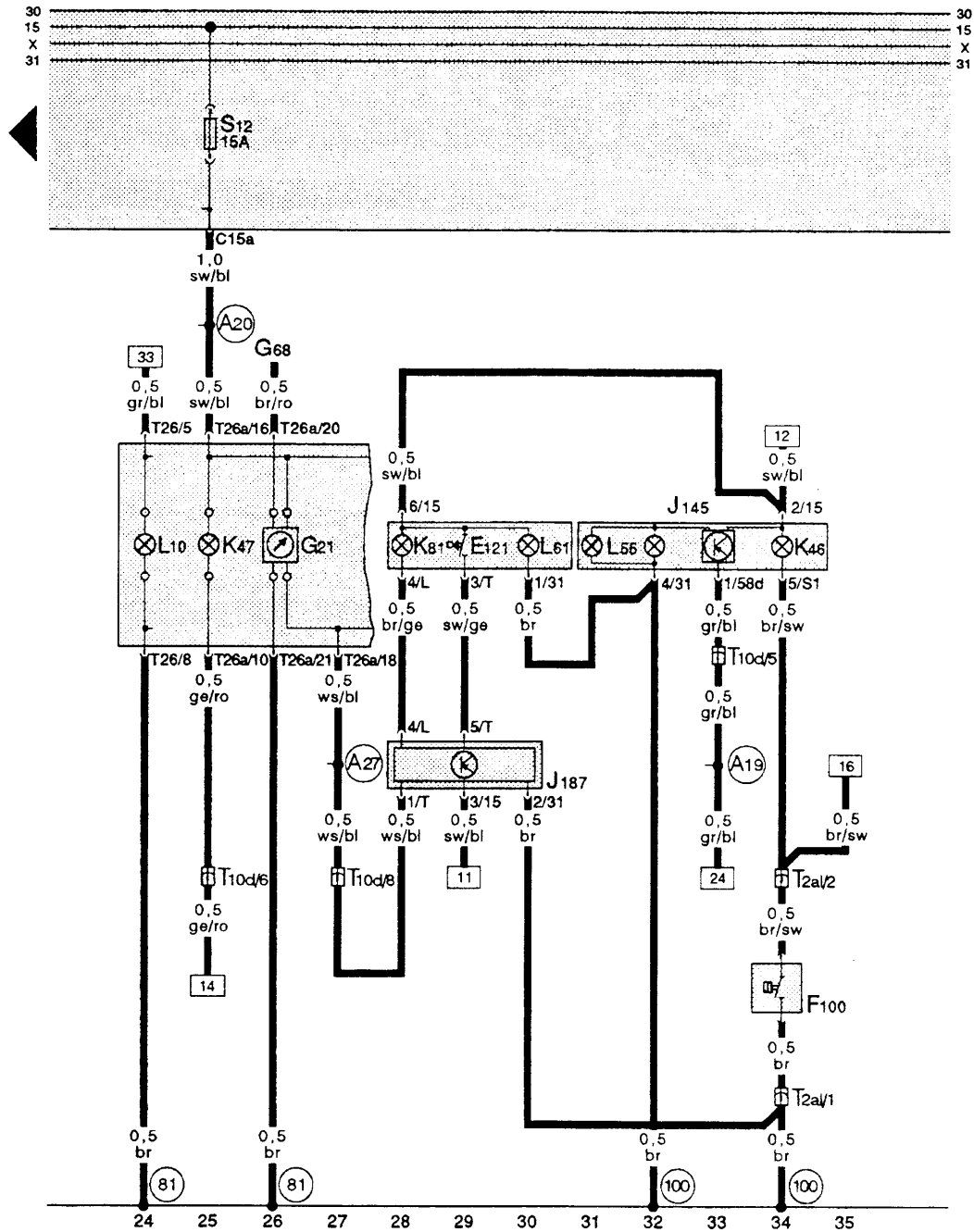


Wiring colours:

- ws = white
- sw = black
- ro = red
- br = brown
- gn = green
- bl = blue
- gr = grey
- li = purple
- ge = yellow

- J 104 – Control unit for ABS with EDL
- J 105 – Relay for return flow pump – ABS
- J 106 – Relay for solenoid valves – ABS
- N 55 – Hydraulic unit for ABS
- N 58 – Solenoid valve for ABS – front right
- N 59 – Solenoid valve for ABS – front left
- N 77 – Solenoid valve for ABS – rear
- V 39 – Return flow pump for ABS
- Ⓣ – Earth point, at hydraulic unit

Anti-lock braking system with four-wheel drive



Wiring colours:

- ws = white
- sw = black
- ro = red
- br = brown
- gn = green
- bl = blue
- gr = grey
- li = purple
- ge = yellow

97-15976

- | | |
|---|--|
| E 121 – Switch for rear differential lock | ⊗1 – Earth connection – 1 –, in dash panel wiring loom |
| F 100 – Switch for differential lock/rear axle | ⊗100 – Earth connection – 1 –, in ABS wiring loom |
| G 21 – Speedometer | ⊗158d – Connection (58d), in dash panel wiring loom |
| G 68 – Road speed sender (inductive sender unit with 2 connections) | ⊗15a – Connection (15a), in dash panel wiring loom |
| J 145 – Indicator | ⊗27 – Connection (speed signal), in dash panel wiring loom |
| J 187 – Control unit for diff. lock | |
| K 46 – Rear differential lock warning lamp | |
| K 47 – ABS warning lamp | |
| K 81 – Warning lamp for differential lock | |
| L 10 – Dash panel insert light bulb | |
| L 55 – Light for differential lock indicator | |
| L 61 – Differential lock switch bulb | |
| T 2a1 – Connector 2 pin, white, under rear seat left | |
| T 10d – Connector 10 pin, blue, connector point in aux. relay carrier | |
| T 26 – Connector 26 pin, yellow, on dash panel insert | |
| T 26a – Connector 26 pin, blue, on dash panel insert | |