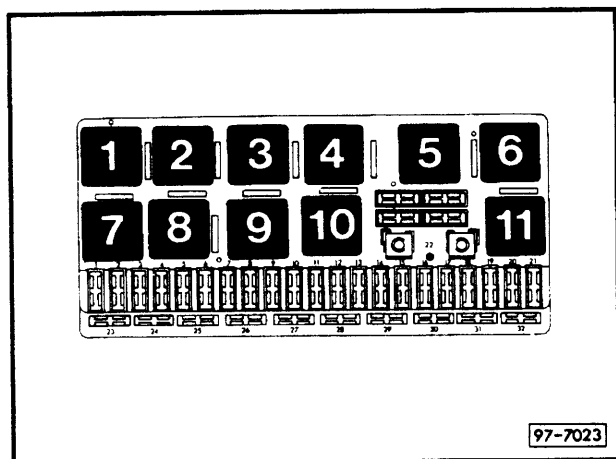


Anti-lock brake system with four-wheel drive

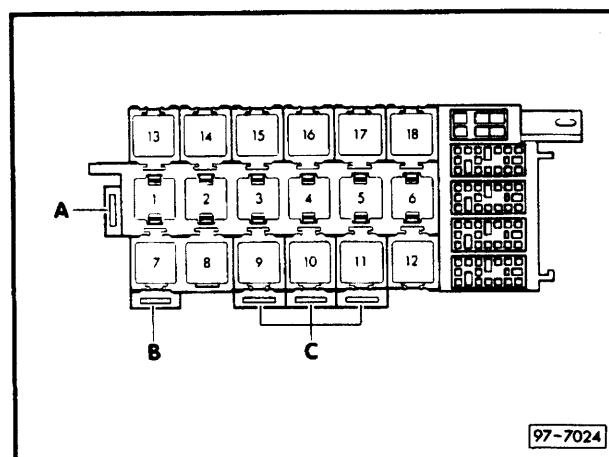
from July 1992

Position of relays
also see "Fitting Locations"
Relay plate with fuse holder:



Position of relays:

Auxiliary relay carrier, front
(under dash panel, left)

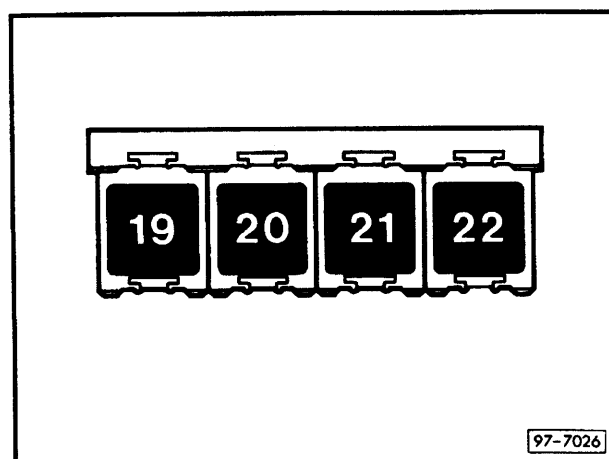


Position of relays:

Fuse colours

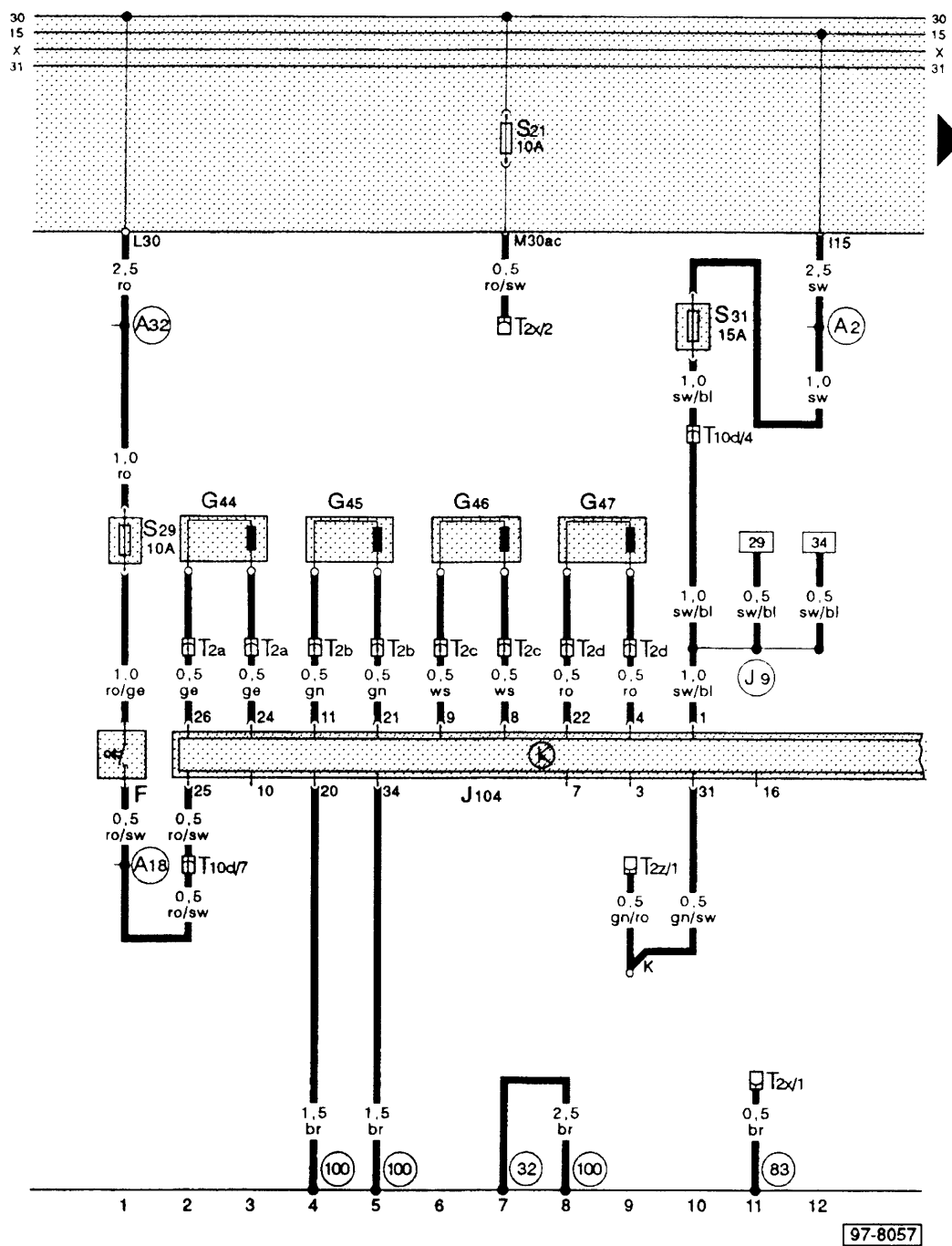
30 A – green
25 A – white
20 A – yellow
15 A – blue
10 A – red
5 A – beige

Auxiliary relay carrier, rear
(under rear seat bench, left)



Position of relays:

Anti-lock brake system with four-wheel drive

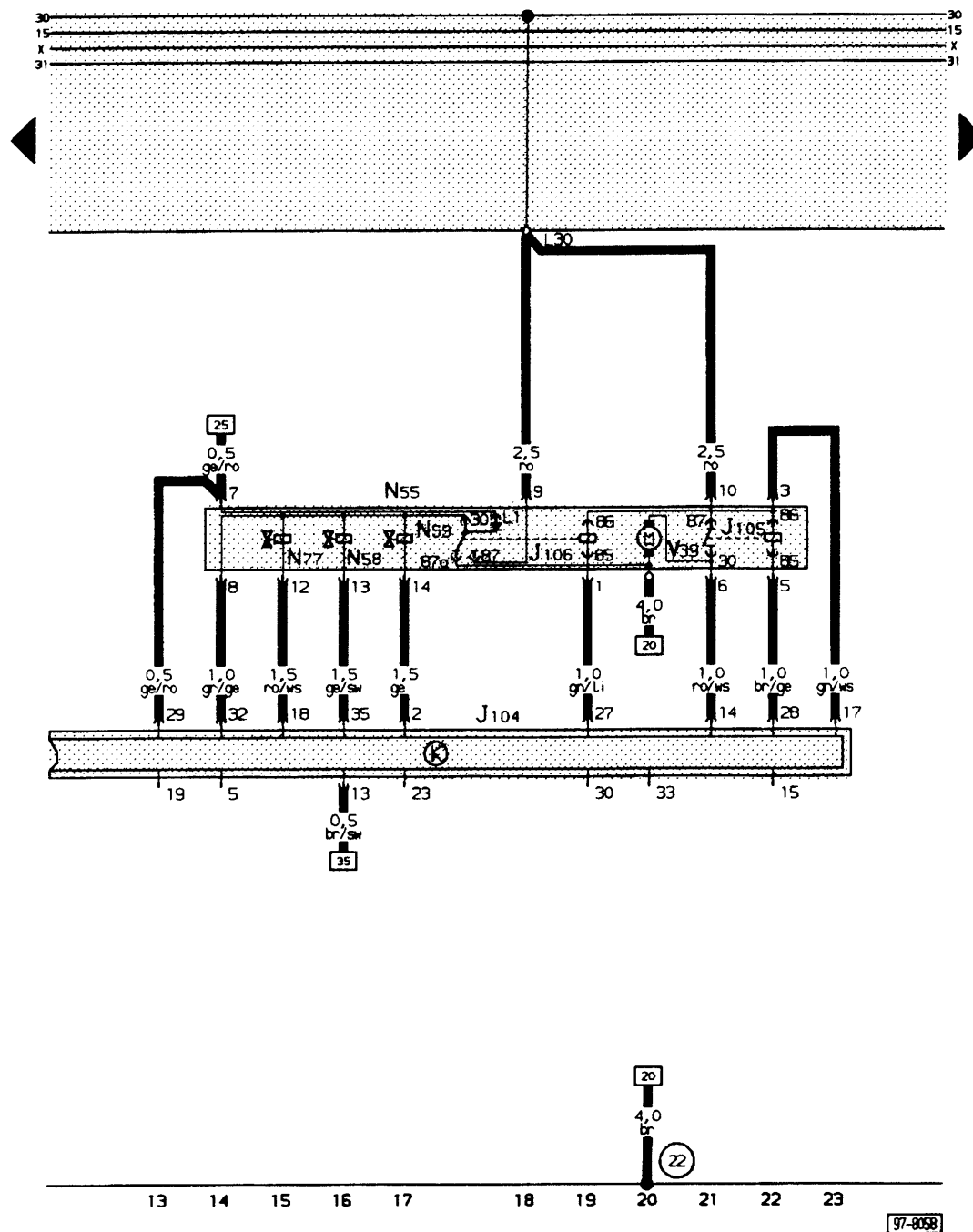


- F – Brake light switch
- G 44 – Rear right speed sensor
- G 45 – Front right speed sensor
- G 46 – Rear left speed sensor
- G 47 – Front left speed sensor
- J 104 – Control unit for ABS with EDL
- S 29 – Fuse for brake lights (in additional fuse holder)
- S 31 – Separate fuse for ABS (in additional fuse holder)
- T 2a – Connector 2 pin, under rear seat bench, right
- T 2b – Connector 2 pin, in engine compartment, right
- T 2c – Connector 2 pin, under rear seat bench, left
- T 2d – Connector 2 pin, in engine compartment, left
- T 2x – Connector 2 pin, black, in plenum chamber near relay plate (diagnosis plug)
- T 2z – Connector 2 pin, white, in plenum chamber near relay plate (diagnosis plug)
- T 10d – Connector 10 pin, blue, connector point in aux. relay carrier

- ⊙32 – Earth point, behind dash panel, left
- ⊙83 – Earth connection – 1 –, in front right wiring loom
- ⊙100 – Earth connection – 1 –, in ABS wiring loom
- ⊙A2 – Positive (+) connection (15), in dash panel wiring loom
- ⊙A18 – Connection (54), in dash panel wiring loom
- ⊙A32 – Positive connection (30), in dash panel wiring loom
- ⊙J9 – Connection – 1 – (15a), in ABS wiring loom
- K – Wiring adaptor for diagnosis plug

Note: Wiring adaptors are screwed onto frame of relay carrier (in plenum chamber).

Anti-lock brake system with four-wheel drive



Wiring colours:

bl = blue
 br = brown
 ge = yellow
 gn = green
 gr = grey
 li = purple
 ro = red
 sw = black
 ws = white

- J 104 – Control unit for ABS
- J 105 – Return flow pump relay – ABS
- J 106 – Solenoid valve relay – ABS
- N 55 – ABS hydraulic unit
- N 58 – ABS solenoid valve, front right
- N 59 – ABS solenoid valve, front left
- N 77 – Solenoid valve for ABS, rear
- V 39 – ABS return flow pump
- Ⓔ – Earth point, on hydraulic unit

bl = blue
br = brown
ge = yellow
gn = green
gr = grey
li = purple
ro = red
sw = black
ws = white

- | | | | |
|-------|---|-------|--|
| E 121 | – Switch for rear differential lock | (81) | – Earth connection – 1 –, in dash panel wiring loom |
| F 100 | – Switch for differential lock/rear axle | (101) | – Earth connection – 1 –, in ABS wiring loom |
| G 21 | – Speedometer | A19 | – Connection (58d), in dash panel wiring loom |
| G 22 | – Speedometer sender | A20 | – Connection (15a), in dash panel wiring loom |
| J 145 | – Indicator | A27 | – Connection (speed signal), in dash panel wiring loom |
| J 187 | – Control unit for diff. lock | A57 | – Connection (ABS), in dash panel wiring loom |
| K 46 | – Rear differential lock warning lamp | | |
| K 47 | – ABS warning lamp | | |
| K 81 | – Warning lamp for differential lock | | |
| L 10 | – Dash panel insert light bulb | | |
| L 55 | – Light for differential lock indicator | | |
| L 61 | – Differential lock switch bulb | | |
| T 2a1 | – Connector 2 pin, white, under rear seat bench, left | | |
| T 10d | – Connector 10 pin, blue, connector point in aux. relay carrier | | |
| T 26 | – Connector 26 pin, yellow, on dash panel insert | | |
| T 26a | – Connector 26 pin, blue, on dash panel insert | | |