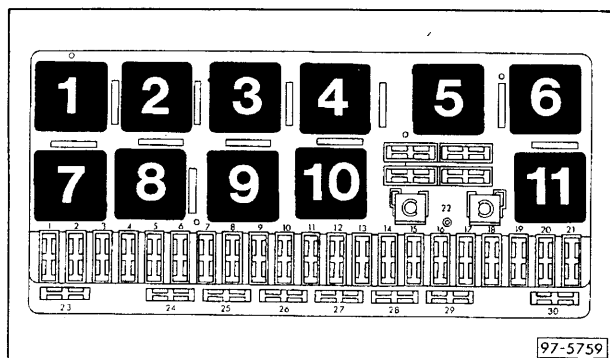


On-board computer, 5-cylinder (Motronic 162 kW), Audi Coupé

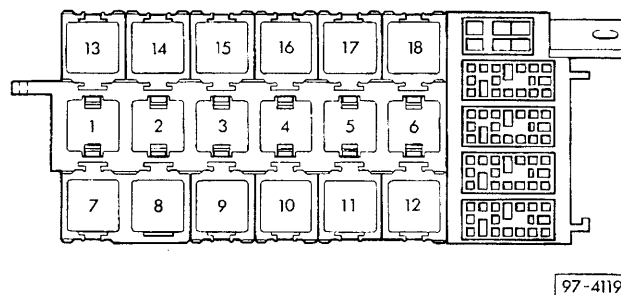
from October 1990

Positions of relays:
also see "Fitting Locations"

Relay plate with fuse holder:



Auxiliary relay carrier:

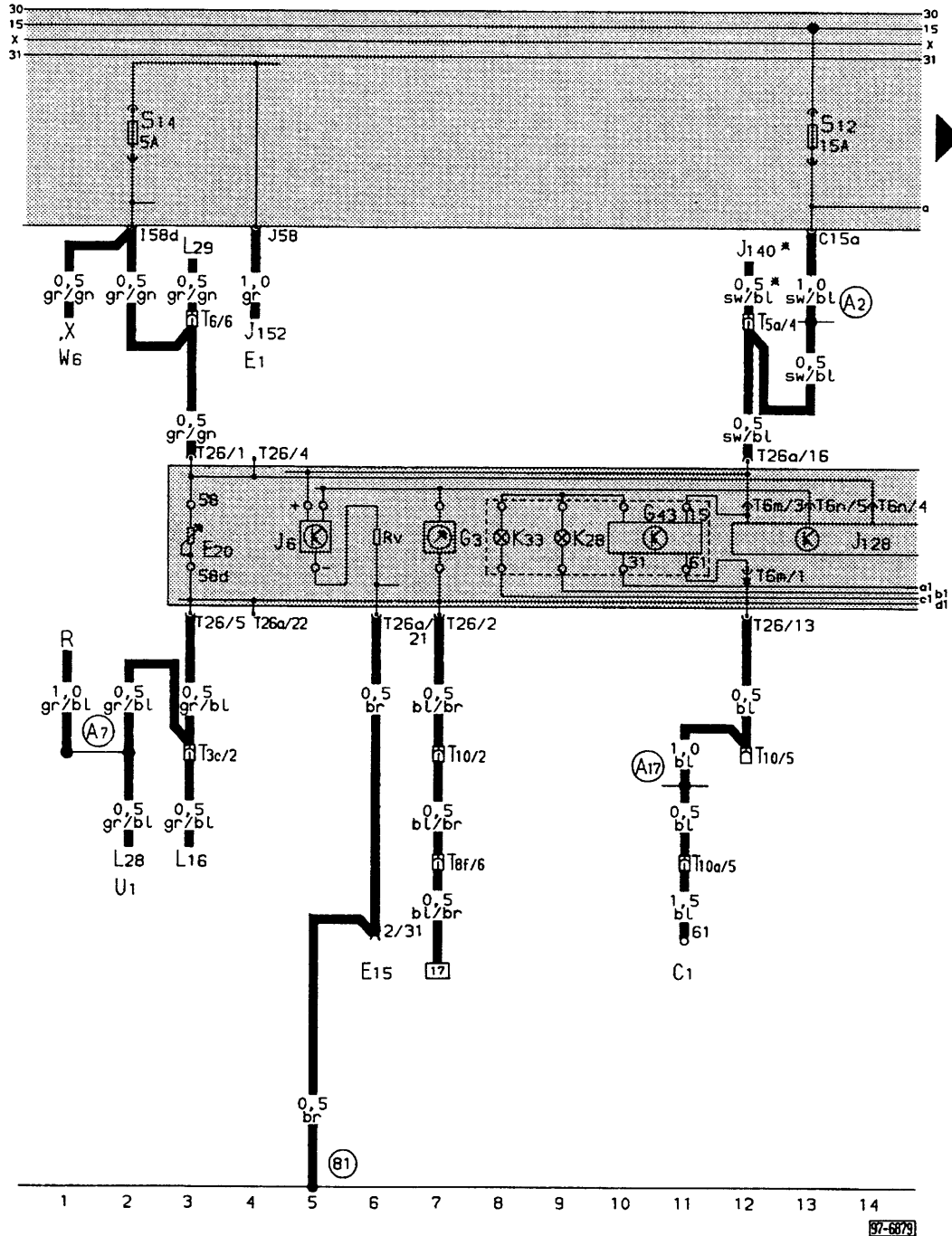


- 8** – Bridge connection with manual gearbox/relay with automatic gearbox

Fuse colours

- 30 A – green
- 25 A – colourless (white)
- 20 A – yellow
- 15 A – blue
- 10 A – red
- 5 A – light brown

On-board computer, 5-cylinder (Motronic 162 kW), Audi Coupé



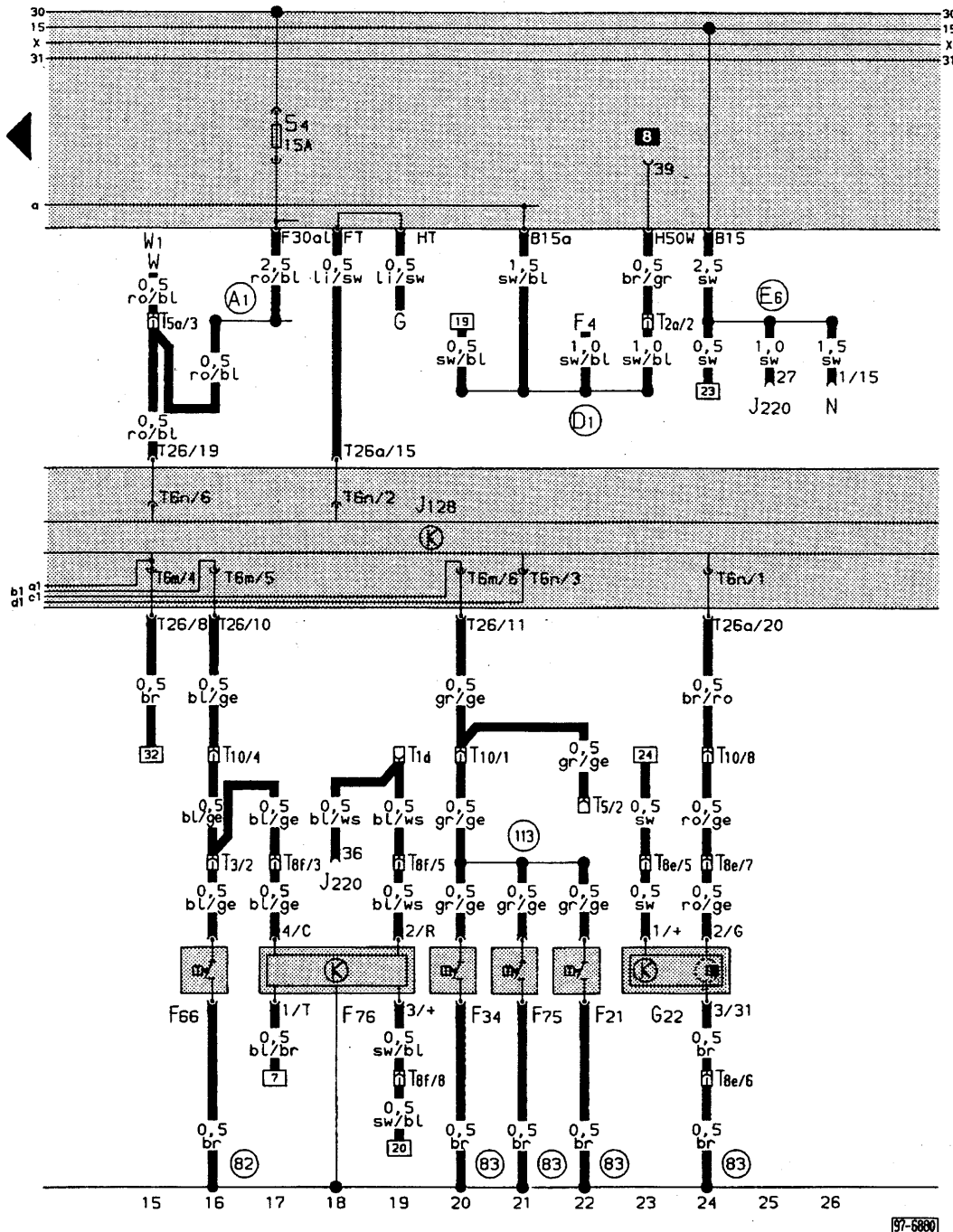
Wiring colours:

- bl = blue
- br = brown
- ge = yellow
- gn = green
- gr = grey
- li = purple
- ro = red
- sw = black
- ws = white

- C 1 – Voltage regulator
- E 1 – Lighting switch
- E 15 – Heated rear window switch
- E 20 – Switches and instruments – lighting control
- G 3 – Coolant temperature gauge
- G 43 – Flashing sender for warning lamp K 28
- J 6 – Voltage stabilizer
- J 128 – Indicator unit with computer
- J 140 – Switch unit for interior light delay
- J 152 – Buzzer for side lights and radio
- K 28 – Warning lamp for coolant temperature/coolant shortage
- K 33 – Brake fluid level warning lamp
- L 16 – Fresh air controls light bulb
- L 28 – Cigarette lighter light bulb
- L 29 – Engine compartment light bulb
- R – Connection for radio
- T 3c – Connector 3 pin, brown, behind dash panel, centre
- T 5a – Connector 5 pin, brown, connector point in aux. relay carrier
- T 6 – Connector 6 pin, black, connector point in aux. relay carrier
- T 6m – Connector 6 pin, on on-board computer
- T 6n – Connector 6 pin, on on-board computer
- T 8f – Connector 8 pin, brown, in engine compartment, right

- T 10 – Connector 10 pin, black, connector point in aux. relay carrier
- T 10a – Connector 10 pin, yellow, connector point in aux. relay carrier
- T 26 – Connector 26 pin, yellow, dash panel insert
- T 26a – Connector 26 pin, blue, dash panel insert
- U 1 – Cigarette lighter
- W 6 – Glove box light
- X – Number plate light
- ⓑ1 – Earth connection – 1 –, in dash panel wiring loom
- Ⓐ2 – Positive (+) connection (15a), in dash panel wiring loom
- Ⓐ7 – Positive (+) connection (58 D1), in dash panel wiring loom
- Ⓐ7 – Connection (61), in dash panel wiring loom
- * – only with interior light with delay circuit

On-board computer, 5-cylinder (Motronic 162 kW), Audi Coupé



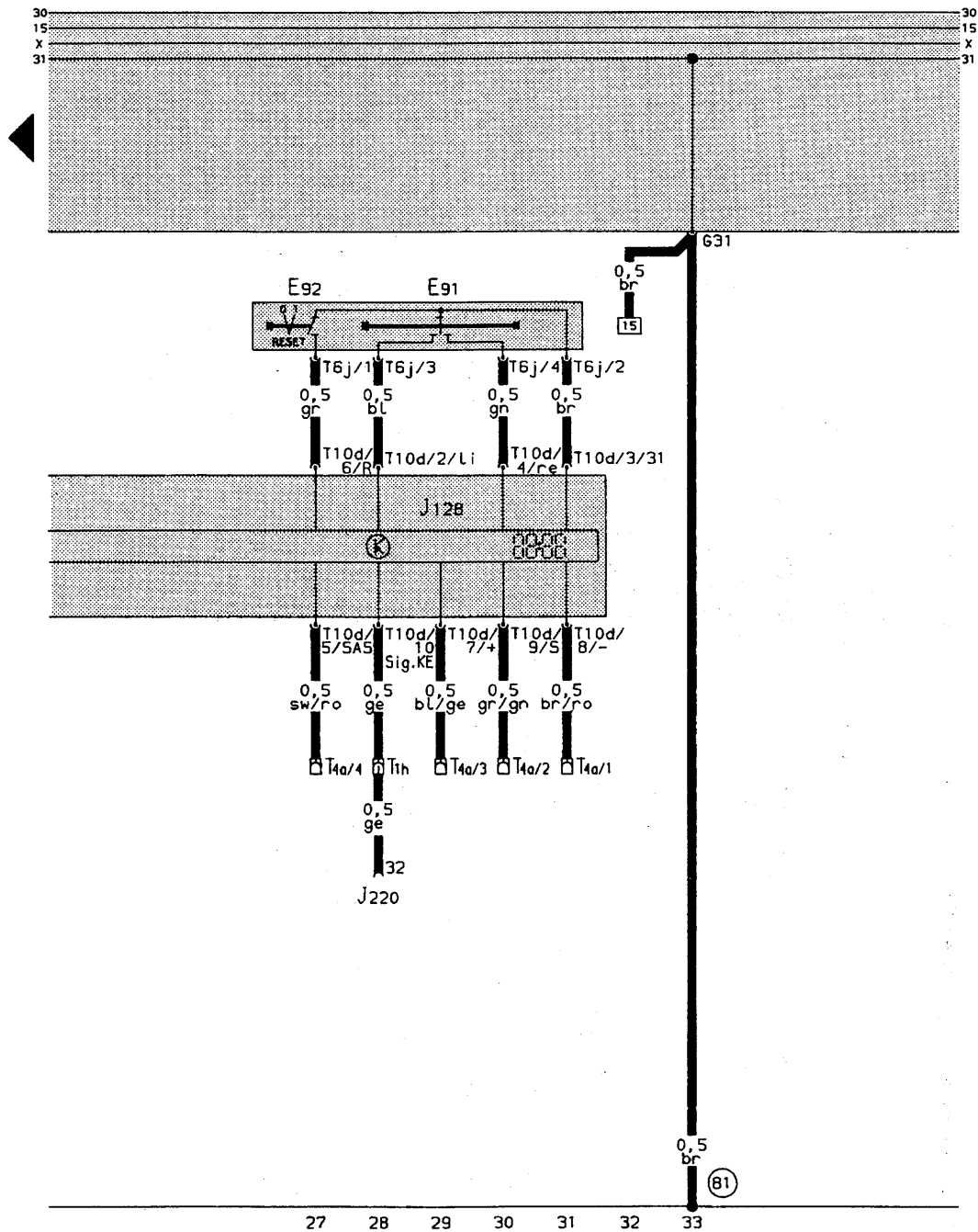
Wiring colours:

- bl = blue
- br = brown
- ge = yellow
- gn = green
- gr = grey
- li = purple
- ro = red
- sw = black
- ws = white

- F 4 – Reversing light switch
- F 21 – Hydraulic brake servo unit warning switch
- F 34 – Brake fluid level warning contact
- F 66 – Coolant shortage indicator switch
- F 75 – Hydraulic fluid warning contact
- F 76 – Electronic thermoswitch
- G – Fuel gauge sender
- G 22 – Speedometer sender
- J 128 – Indicator unit with computer
- J 220 – Control unit for Motronic
- N – Ignition coil
- T 1d – Connector single, white, behind dash panel, left
- T 2a – Connector 2 pin, white, behind dash panel, left
- T 3 – Connector 3 pin, brown, behind dash panel, left
- T 5 – Connector 5 pin, brown, connector point in aux. relay carrier
- T 5a – Connector 5 pin, brown, connector point in aux. relay carrier
- T 6m – Connector 6 pin, on on-board computer
- T 6n – Connector 6 pin, on on-board computer

- T 8e – Connector 8 pin, black, in engine compartment, right
- T 8f – Connector 8 pin, brown, in engine compartment, right
- T 10 – Connector 10 pin, black, connector point in aux. relay carrier
- T 26 – Connector 26 pin, yellow, dash panel insert
- T 26a – Connector 26 pin, blue, dash panel insert
- W – Interior light, front
- W 1 – Interior light, rear
- Ⓢ2 – Earth connection – 1 –, in front left wiring loom
- Ⓢ3 – Earth connection – 1 –, in front right wiring loom
- Ⓐ1 – Positive (+) connection (30a), in dash panel wiring loom
- Ⓓ1 – Positive (+) connection (15a), in front right wiring loom
- Ⓔ6 – Positive connection – 1 – (15), in Motronic wiring loom

On-board computer, 5-cylinder (Motronic 162 kW), Audi Coupé



Wiring colours:

- bl = blue
- br = brown
- ge = yellow
- gn = green
- gr = grey
- li = purple
- ro = red
- sw = black
- ws = white

- E 91 – Function selector switch
- E 92 – Reset button
- J 220 – Control unit for Motronic
- T 1h – Connector single, yellow, behind dash panel, left
- T 4a – Connector 4 pin, red, behind dash panel, left
- T 6j – Connector 6 pin, on function selector switch
- T 10d – Connector 10 pin, on on-board computer
- (81) – Earth connection – 1 –, in dash panel wiring loom

97-6881